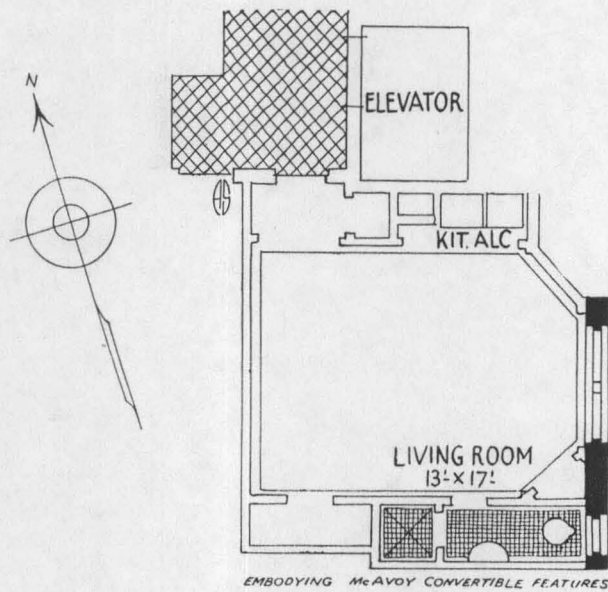


The Grosvenor Square

Ascans Avenue at Burns Street

Forest Hills Gardens

Long Island's most highly restricted residential district — 14 Minutes from Midtown Manhattan.



Fronting on Garden Court facing southeast.

APARTMENT B

1 Room, Bath and Kitchenette

With exclusive use, in order of tenant booking, of Tudor Entertainment Gallery (25' x 50') for dinner, bridge, or dance parties.

(OVER)

The Grosvenor Square

Ascan Avenue at Burns Street

Forest Hills Gardens



C. F. and D. E. McAvoy...Architects
A. H. Eccles.....Associate Architect

Grosvenor Atterbury.....Architect
John Tompkins.....Associated
Consulting Architects and Designers of Exterior

GROSVENOR - GARDENS
Incorporated
Owners

Schimmenti & Terranova
General Contractors

From the combined standpoint of design, construction, accommodations, locality and orientation, this apartment dwelling should be classed as the finest in Queensboro . . . ranking, too, with the best in Manhattan, providing—

Twenty-two Apartment Selections

THROUGH THE EMBODIMENT OF McAVOY CONVERTIBLE FEATURES

With exclusive use, in order of tenant booking, of Tudor Entertainment Gallery (25' x 50') for dinner, bridge, or dance parties.

ROOMS	BATHS	APARTMENT	ORIENTATION
1	1 (Kitchenette)	B	South
1	1 (Kitchenette)	G1	Southwest
2	1 (Kitchenette)	G	S. and S. W.
2	1 (Kitchenette)	F	S. E. and N. E.
3	1 & Dining Alc	E	S. W. and N. E.
3	1 & Dining Alc	C	S. W., W. and N. E.
4	2 & Dining Alc	D	S. W. and N. E.
4	2 & Dining Alc	H	S. E., S. and S. W.
4	2 & Dining Alc	EG1	S. W. and N. E.
4½	2 & Dining Alc	A	S., S. W. and W.
5	3 & Dining Alc	DB	S. W. and N. E.
5	2 & Dining Alc	HG1	S. E., S. and S. W.
5	2 & Dining Alc	EF	S. W., S. E. and N. E.
5	2 & Dining Alc	EG	S. W. and N. E.
5½	3 & Dining Alc	AA	S., S. W. and W. (Entire front west wing)
6	3 & Dining Alc	HH	S. E., S., S. W. and W. (Entire front east wing)
6	3 & Dining Alc	EE	S. W., S. E. and N. E.
7	3 & Dining Alc	EEE	S., S. W., S. E. and N. E.
9	4 & Dining Alc	HHH	S. E., S., S. W. and N. E. (Entire east front wing and centre court)
9½	5 & Dining Alc	AAA	S., S. W., W. and N. E. (Entire west front wing and centre court)
11	5 & Dining Alc	HHH1	S. E., S., S. W., W. and N. E. (Entire east wing)
12½	6 & Dining Alc	AAA1	S., S. W., W., N. W. and N. E. (Entire west wing)

Variety of desirable exposures commanded by all apartments—majority possessing several corner exposures;—providing unsurpassed cross ventilation. All rooms open from foyer.

NOTE: All descriptive diagrams and dimensions approximate as to form and size.



Detailed plans on request—Refer to Apt. Letters

WM. D. BLOODGOOD & CO., Inc.

Rental Agents

Queensboro Plaza South, New York City
Telephone STillwell 4-6431

Property—150 Burns St., Forest Hills Gardens, L. I.
Telephone BOulevard 8-4081

