

FOREST HILLS GARDENS



THE SAGE FOUNDATION HOMES
COMPANY

NEW YORK
47 WEST THIRTY-FOURTH STREET
MCMXIII



FOREST HILLS INN AND STATION SQUARE



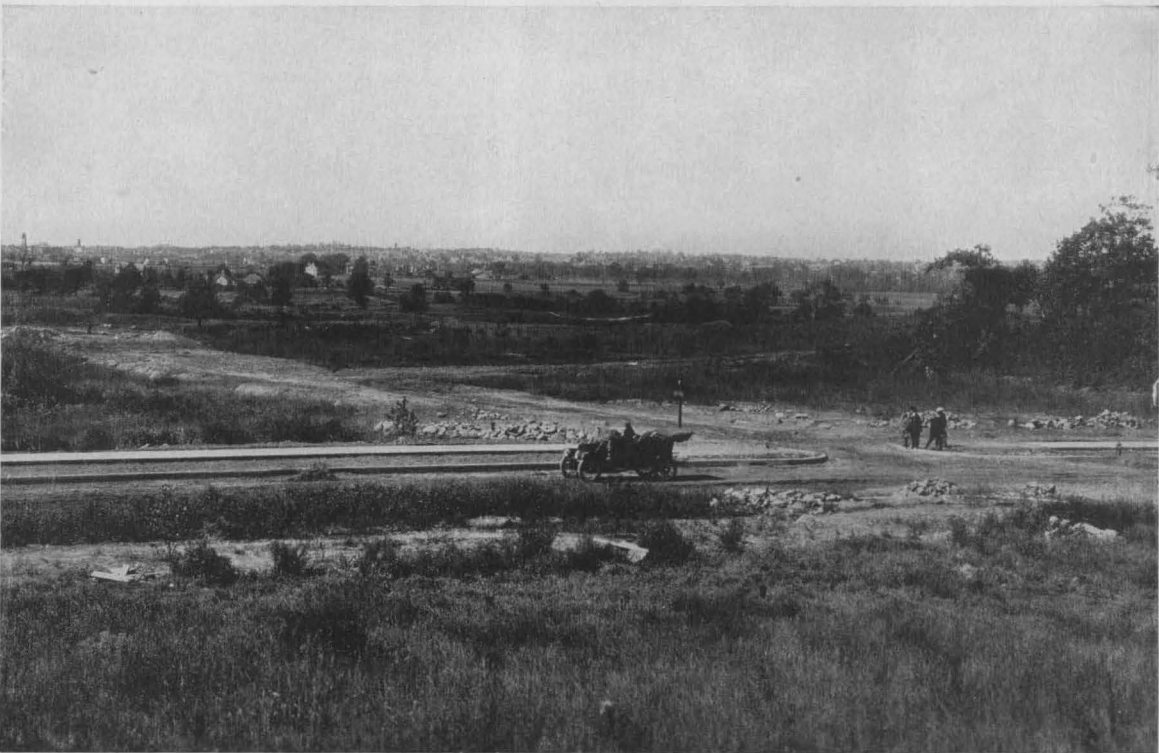
HOUSEKEEPING APARTMENTS IN STATION SQUARE



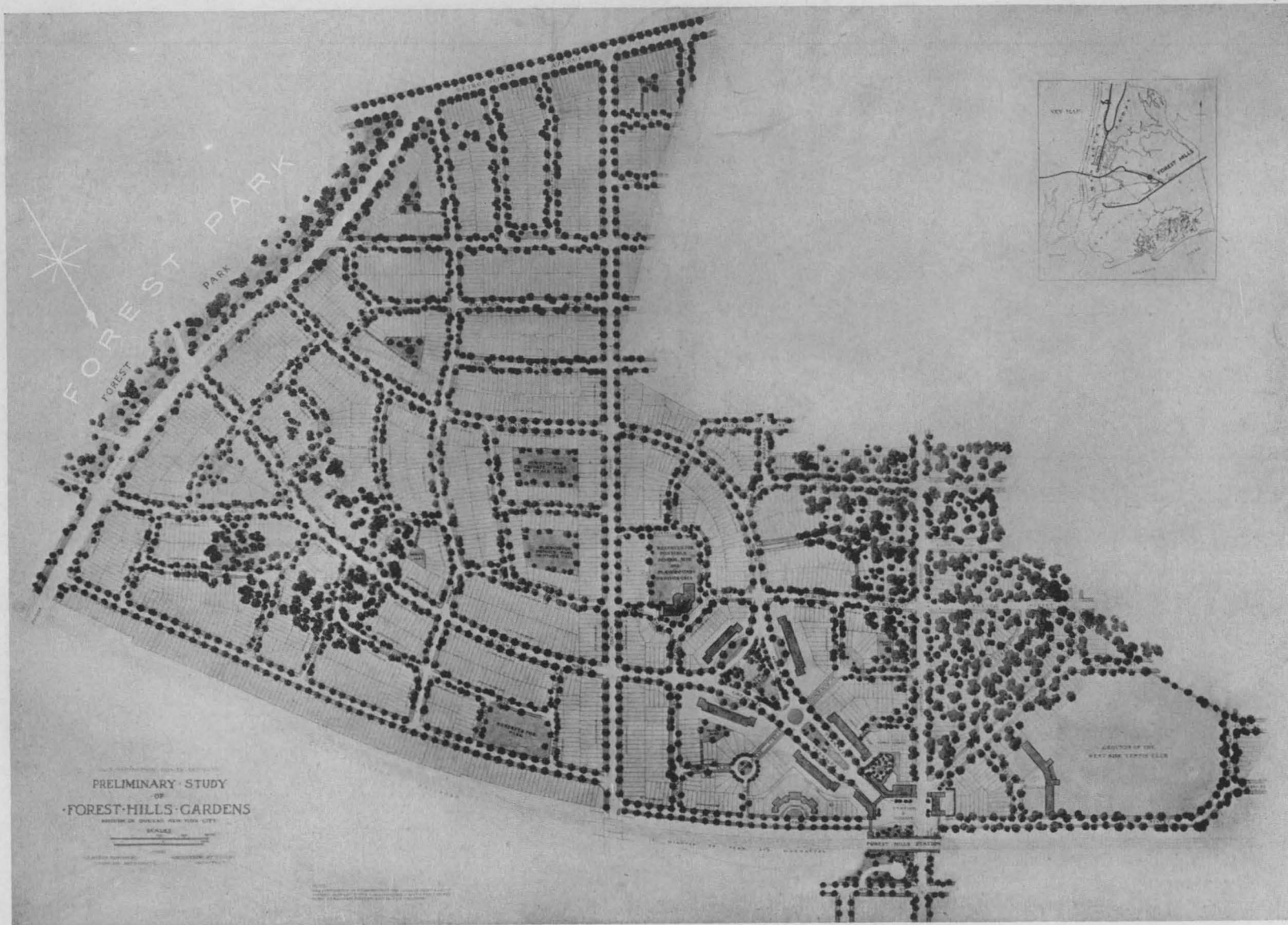
FOREST HILLS GARDENS



GROUP XII
LOOKING NORTH FROM FOREST PARK



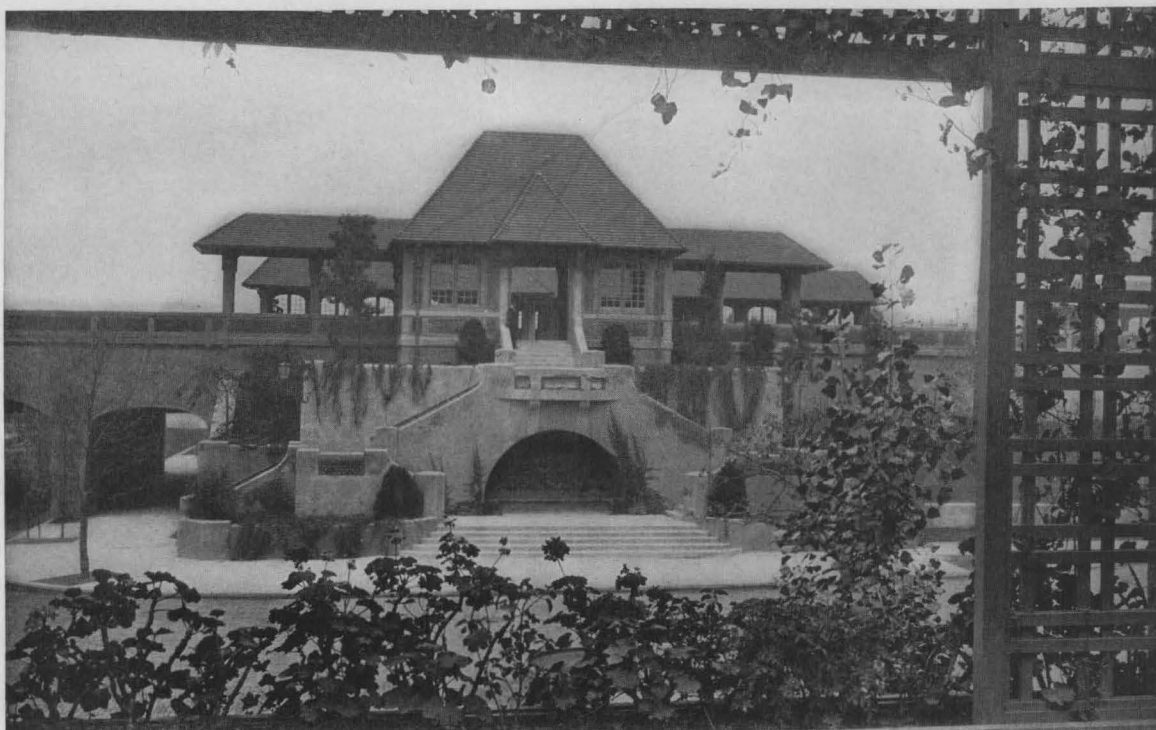
GREENWAY NORTH AND UPTON STREET
LOOKING NORTHWEST FROM FOREST PARK



STUDY OF THE LAYOUT OF FOREST HILLS GARDENS



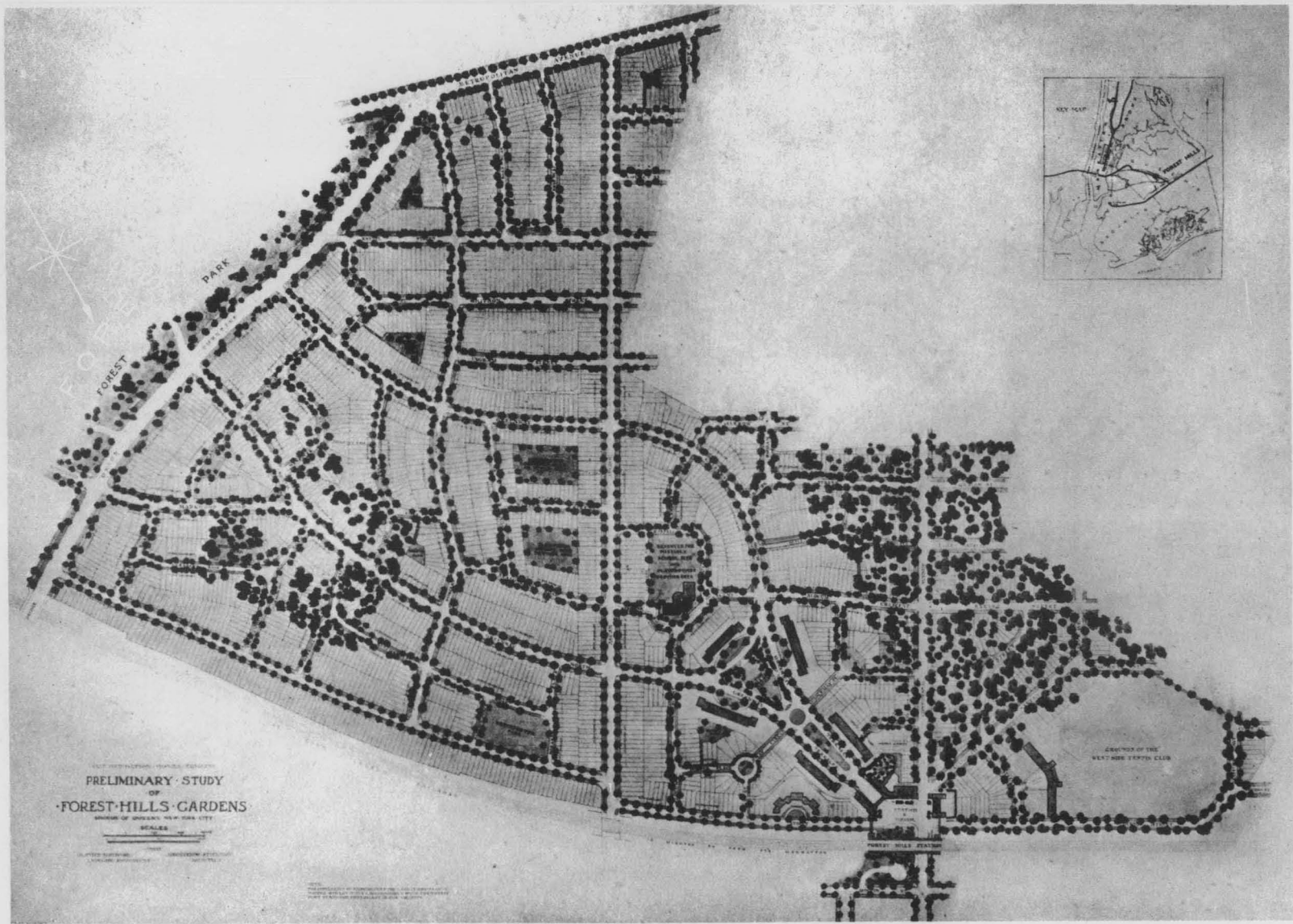
FOREST HILLS GARDENS



THE STATION FROM SECOND STORY LOGGIA OF THE INN

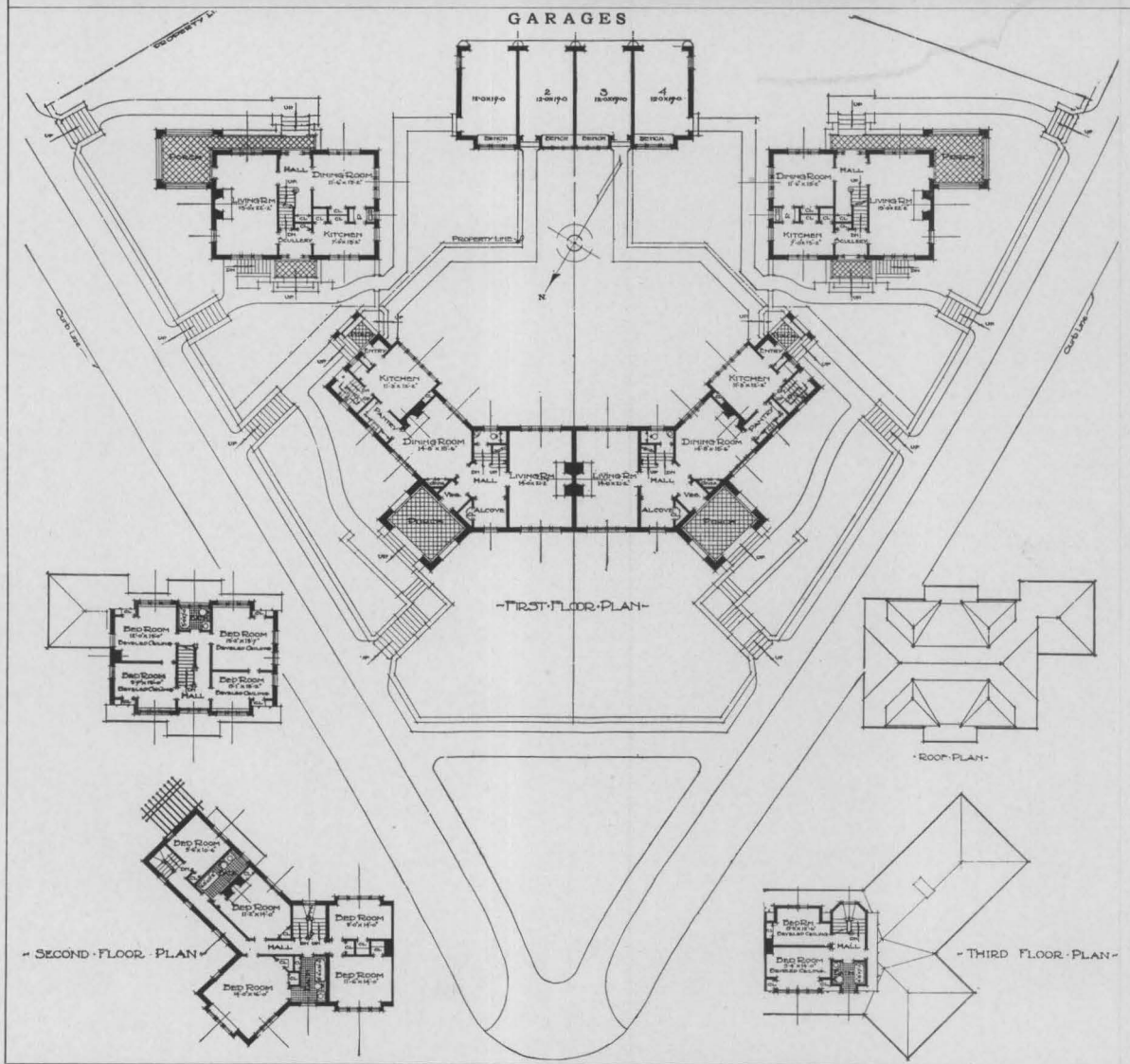


STORES AND APARTMENTS, STATION SQUARE



STUDY OF THE LAYOUT OF FOREST HILLS GARDENS

FOREST HILLS GARDENS



DETACHED HOUSES 7 ROOMS AND BATH

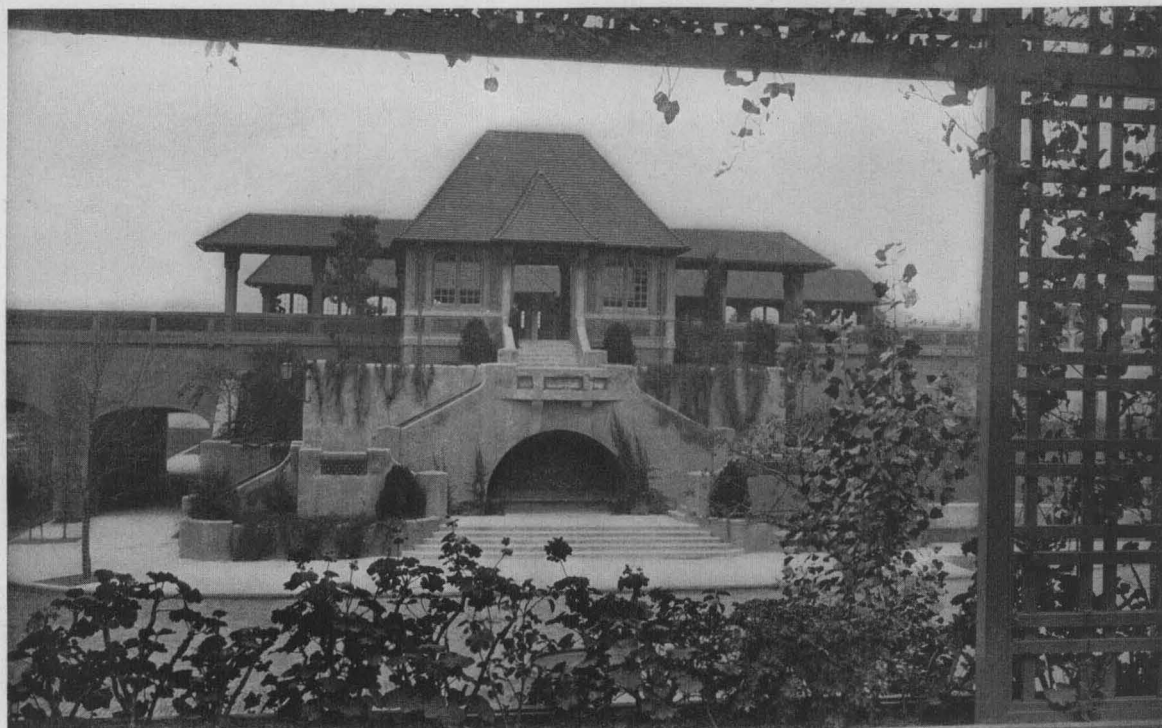
SEMI-DETACHED HOUSES 10 ROOMS AND 3 BATHS

TWO DETACHED AND
TWO SEMI-DETACHED HOUSES

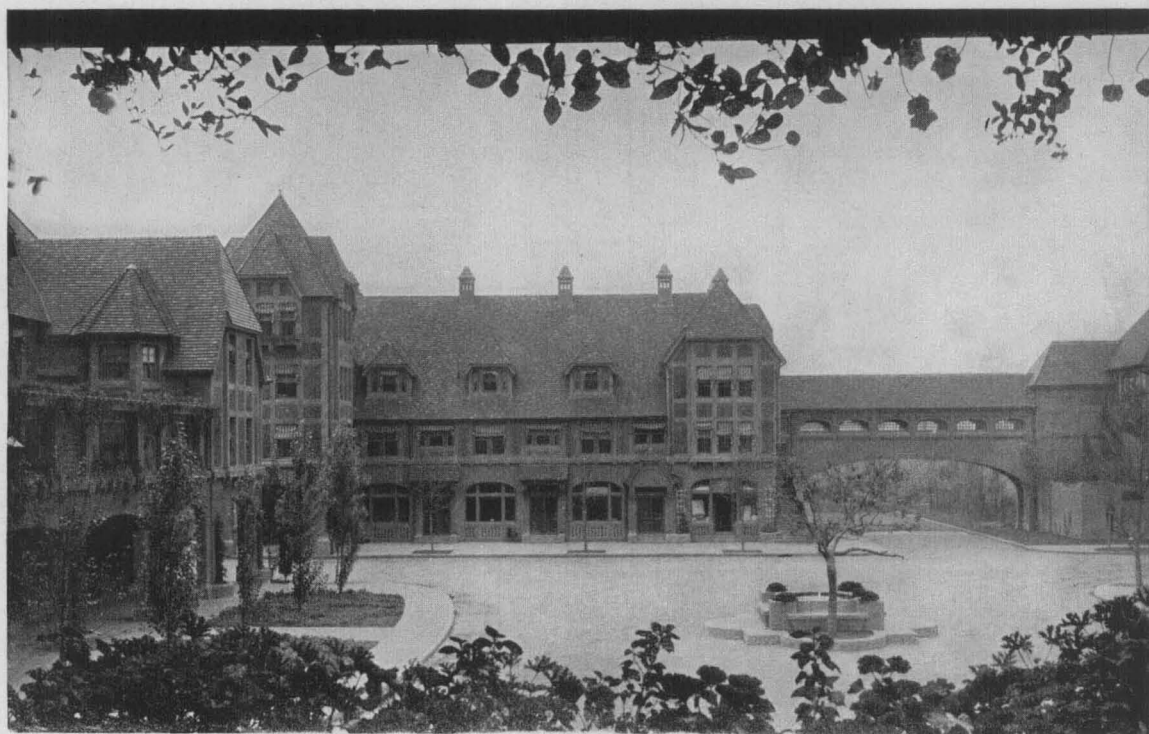
GROUP XII

GROSVENOR ATTERBURY, F. A. I. A.
ARCHITECT

FOREST HILLS GARDENS



THE STATION FROM SECOND STORY LOGGIA OF THE INN

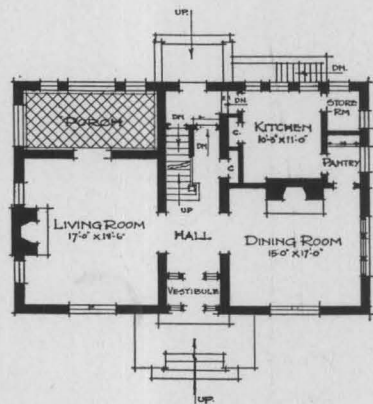


STORES AND APARTMENTS, STATION SQUARE

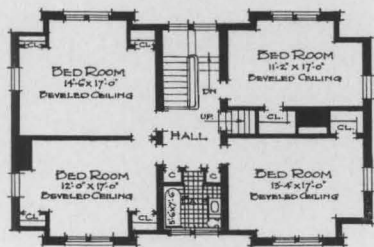
FOREST HILLS GARDENS



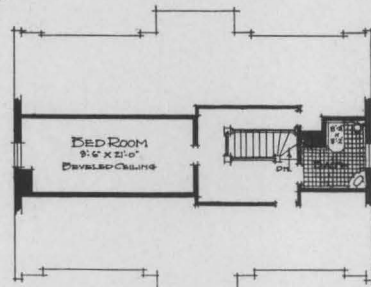
• DETACHED • SINGLE • FAMILY • HOUSE • 1 • F • 50 •
• 8 • ROOMS • 2 • BATHS • AND • LADNDRY •



- FIRST FLOOR PLAN -



- SECOND FLOOR PLAN -



- THIRD FLOOR PLAN -

SINGLE FAMILY
DETACHED HOUSE

HOUSE I-F-50

GROSVENOR ATTERBURY, F. A. I. A.
ARCHITECT

FOREST HILLS GARDENS



PARK IN BLOCK XLII



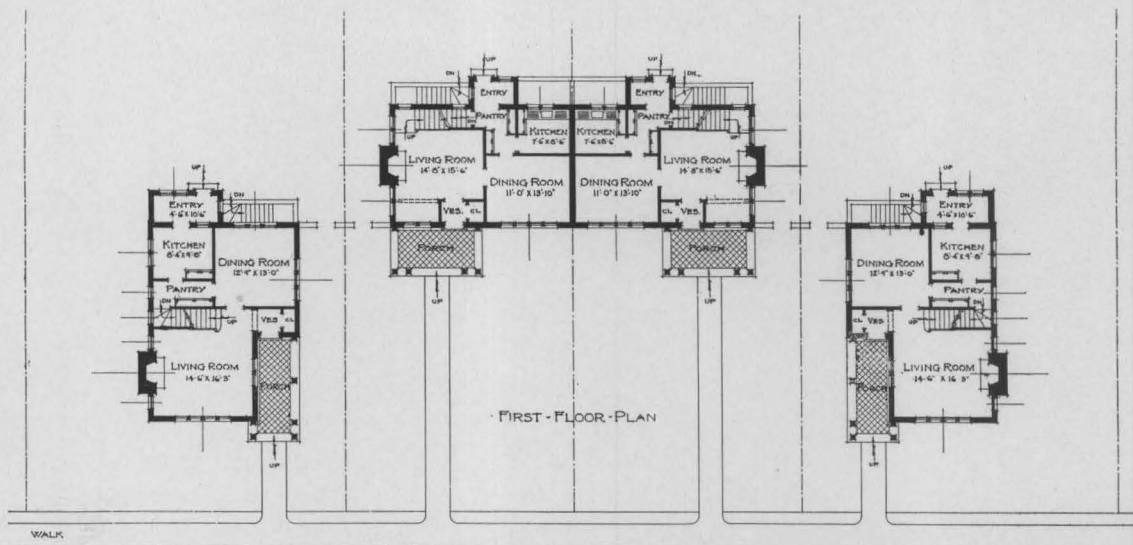
HOUSE I-F-240

SINGLE FAMILY DETACHED
HOUSE

HOUSE I-F-240

GROSVENOR ATTERBURY, F. A. I. A.
ARCHITECT

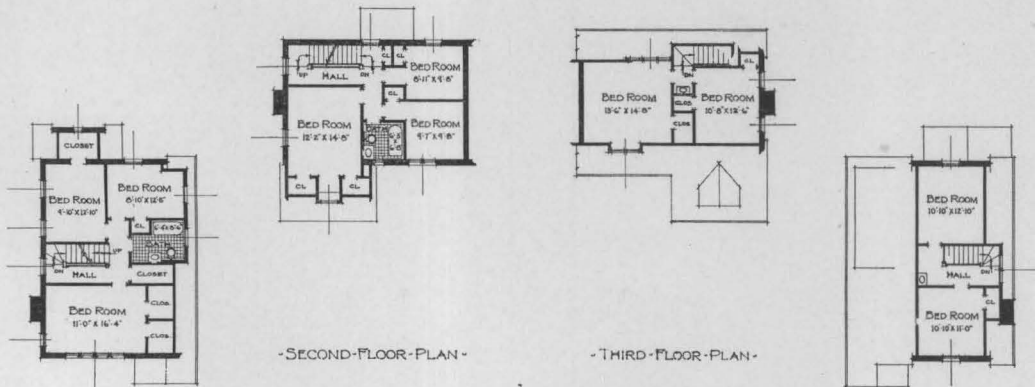
FOREST HILLS GARDENS



WALK

GRASS

CURB LINE



TWO DETACHED, TWO SEMI-DETACHED
SINGLE FAMILY HOUSES

GROUP XXVIII

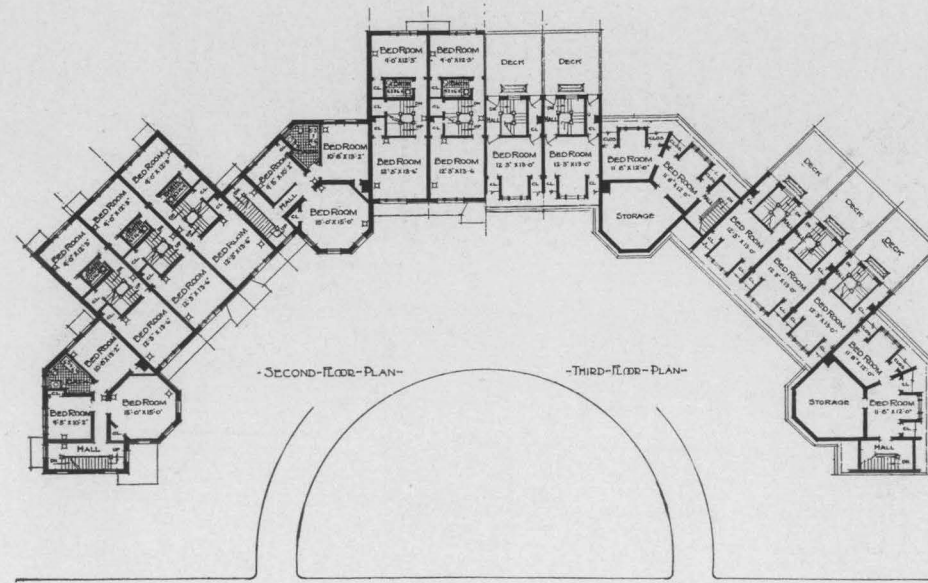
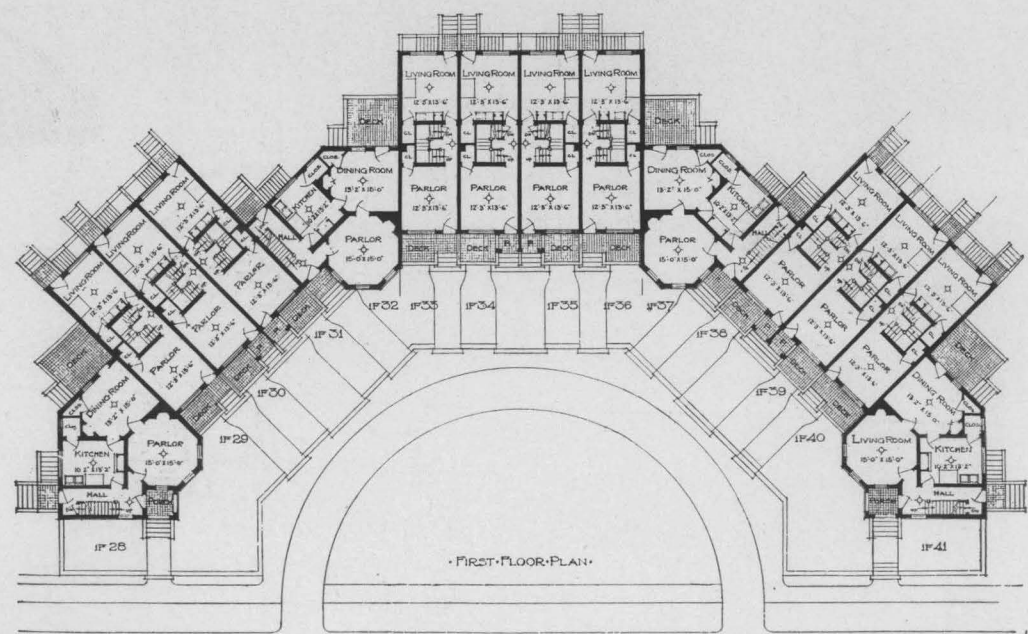
ALBRO & LINDBERG
ARCHITECTS

· FOREST HILLS GARDENS ·
 · DESIGNED FOR THE SAGE FOUNDATION HOMES CO ·



~ GROUP II ~
 · TEN 13-FOOT & FOUR 24-FOOT CORNER SINGLE FAMILY HOUSES ·

Grosvenor Atterbury F. A. I. A.
 Architect - 1912





FOREST HILLS GARDENS, MARCH 1910

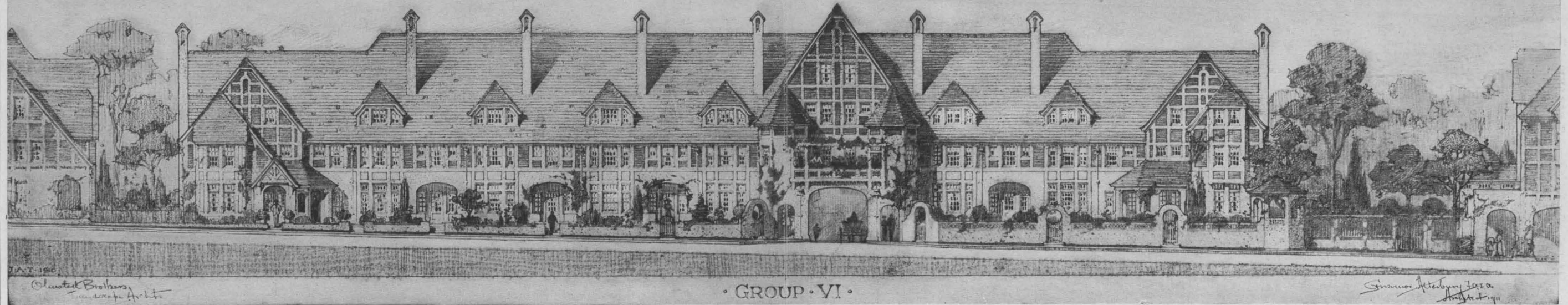


BUILDING OPERATIONS, FOREST HILLS INN, NOVEMBER 1910

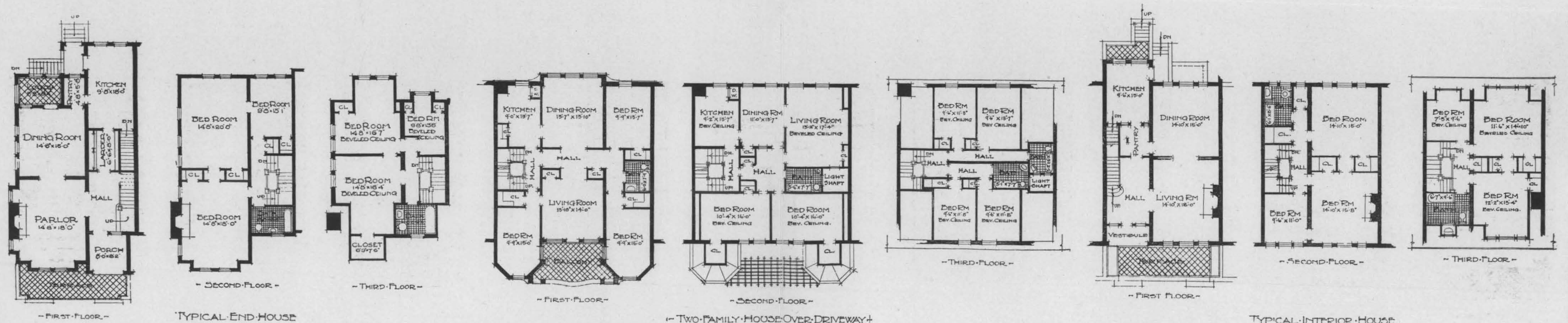


FOREST HILLS INN AND STATION SQUARE, JUNE 1911

• FOREST • HILLS • GARDENS •
 DESIGNED • FOR • THE • SAGE • FOUNDATION • HOMES • CO •

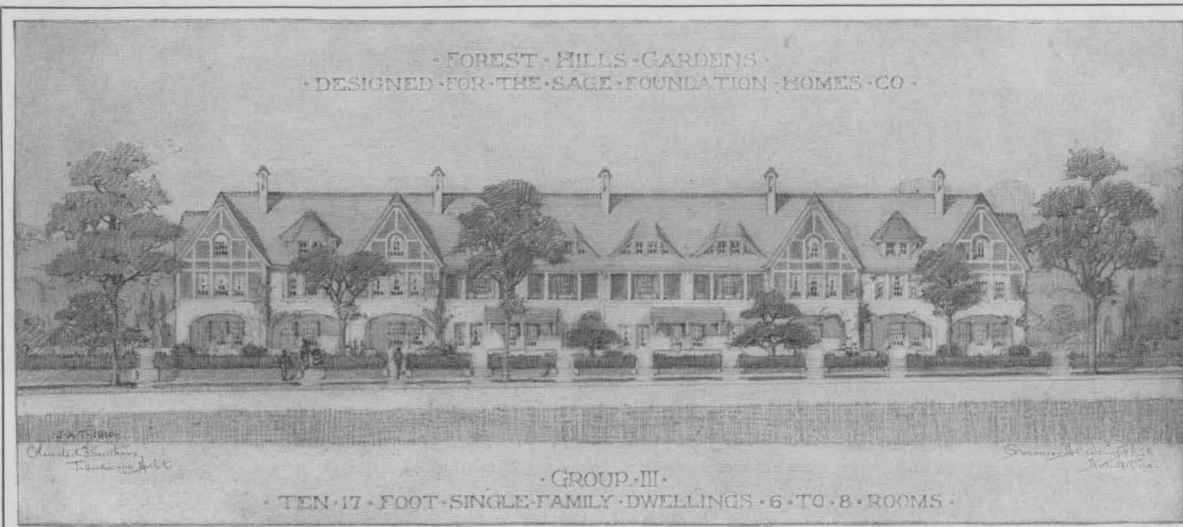


• GROUP • VI •

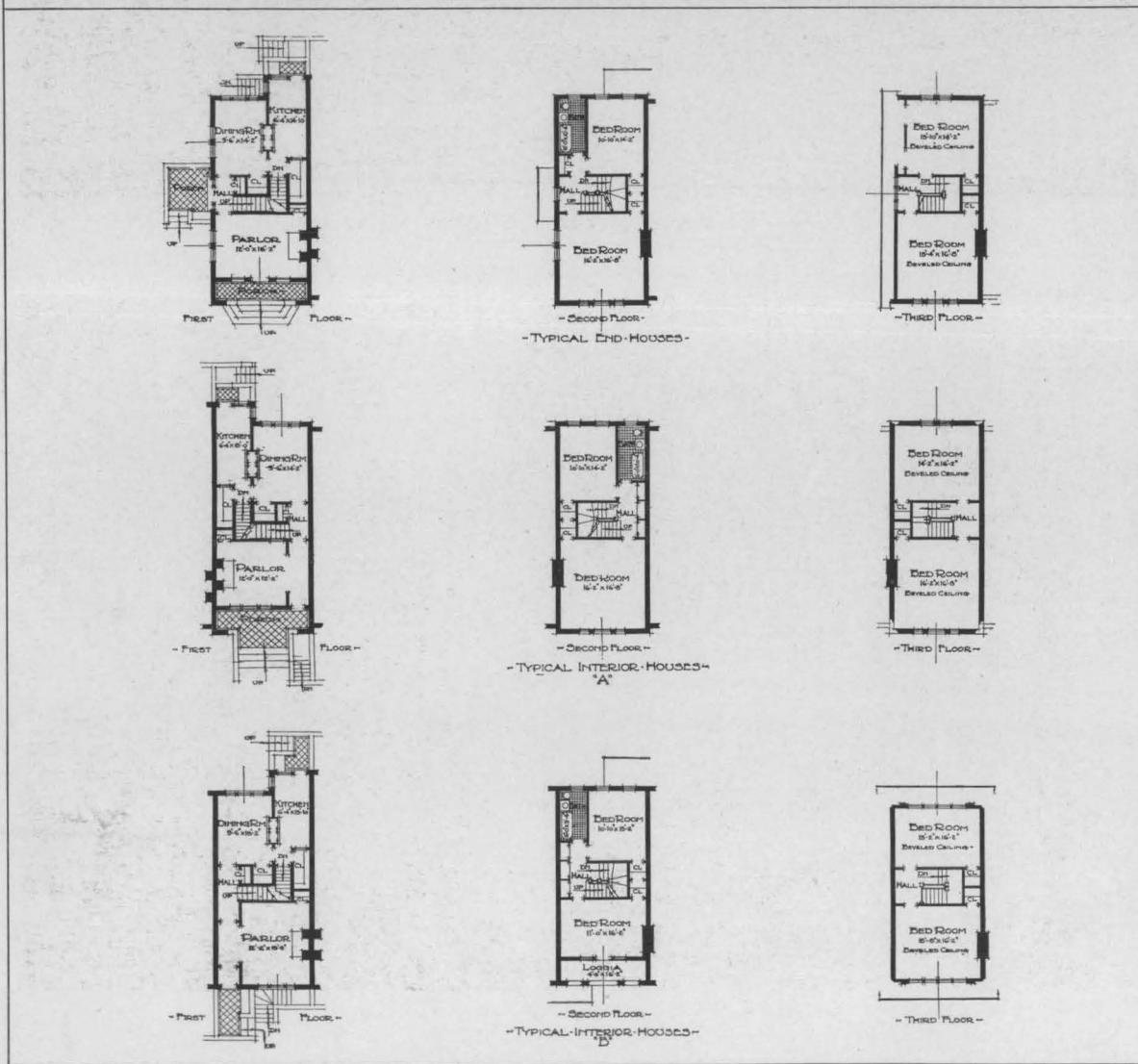


FOREST HILLS GARDENS

FOREST HILLS GARDENS



FRONT ELEVATION OF GROUP III



REAR ELEVATION OF GROUP III

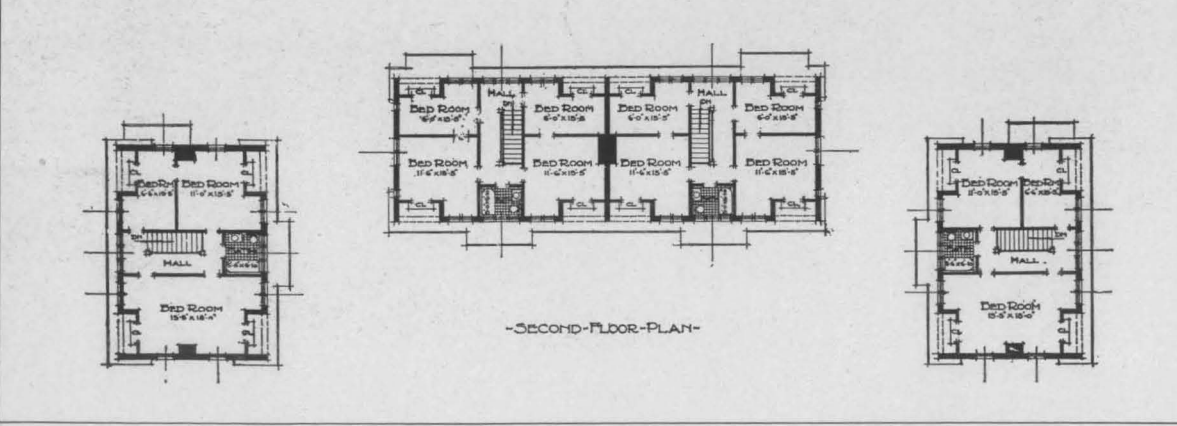
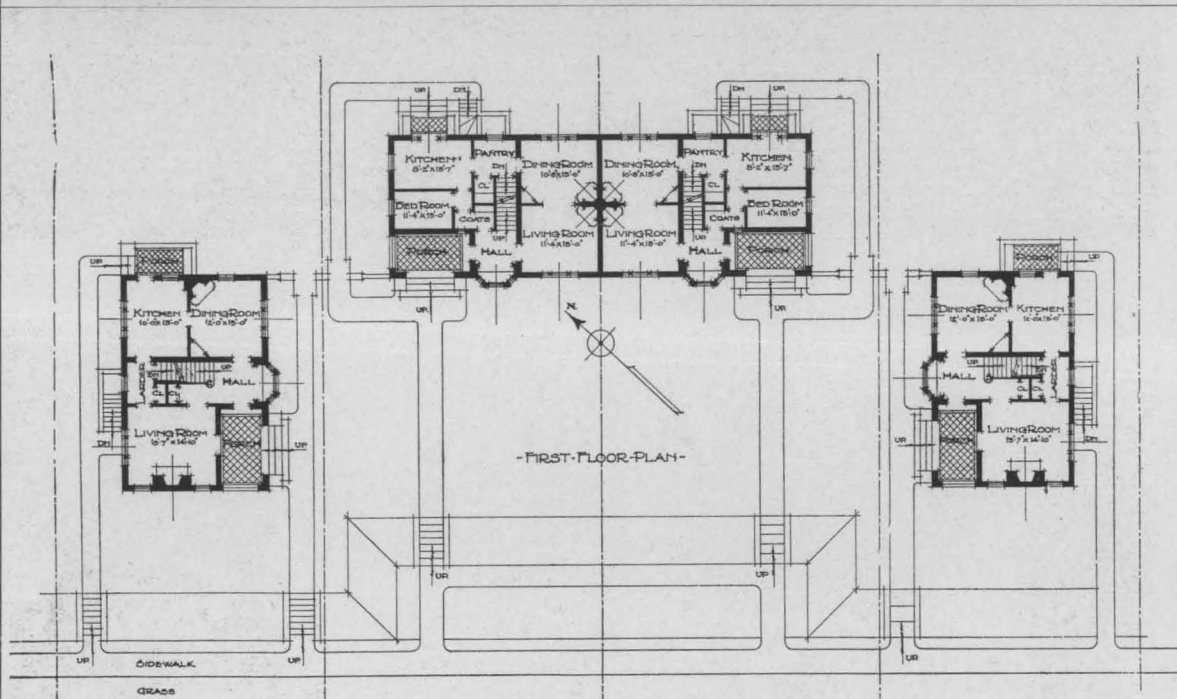
TEN 17-FOOT SINGLE FAMILY HOUSES

GROUP III

GROSVENOR ATTERBURY F. A. I. A. ARCHITECT

FOREST HILLS GARDENS

FOREST HILLS GARDENS



GROUP XI
LOOKING NORTH



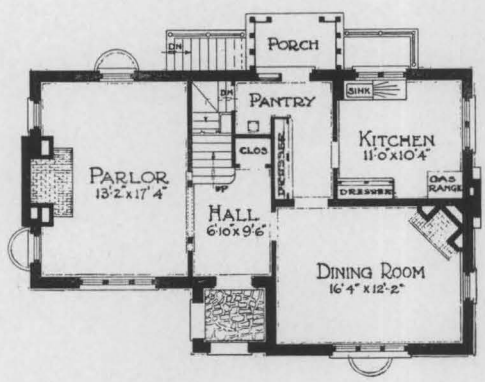
GROUP XI ON BEECHKNOLL ROAD
LOOKING EAST

TWO DETACHED, TWO SEMI-DETACHED
SINGLE FAMILY HOUSES

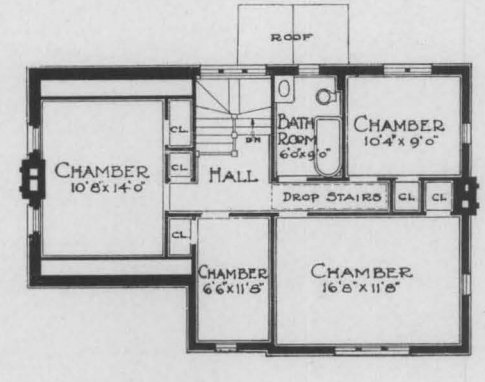
GROUP XI

GROSVENOR ATTERBURY, F. A. I. A.
ARCHITECT

FOREST HILLS GARDENS



• FIRST FLOOR PLAN •

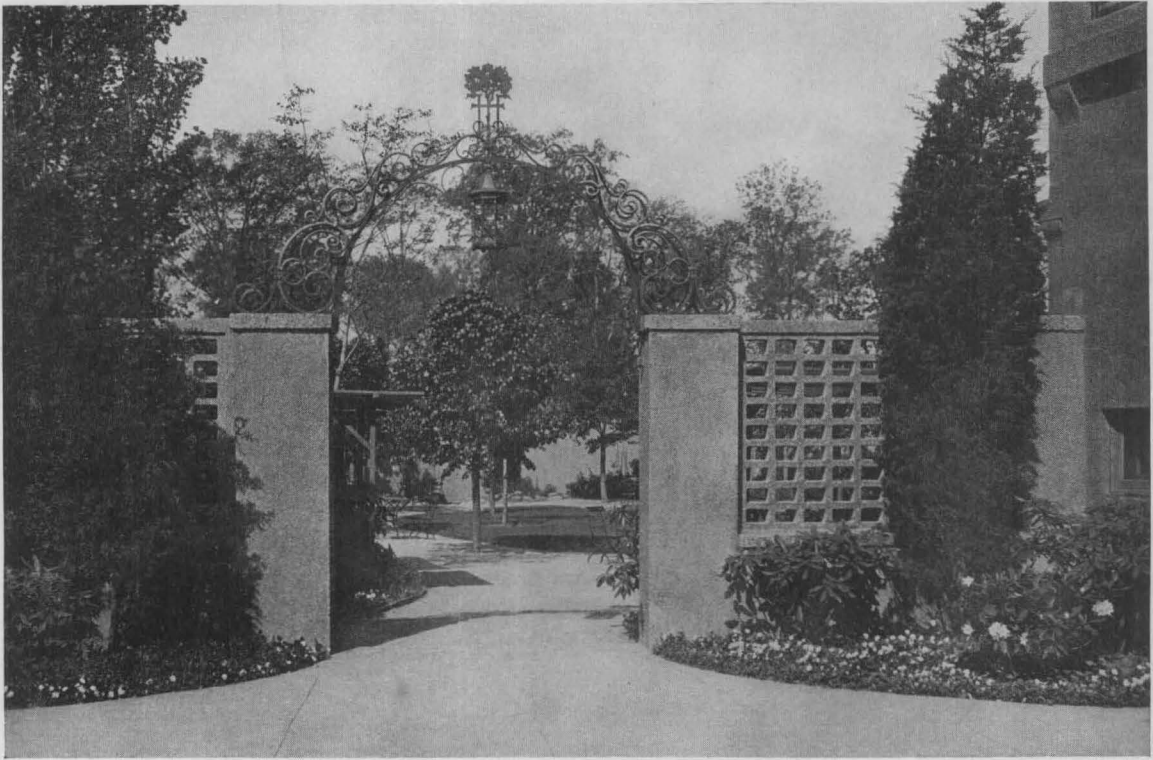


• SECOND FLOOR PLAN •

• SAGE FOUNDATION HOMES CO OWNERS •

• 1 DETACHED SINGLE FAMILY HOUSE •
• 7 ROOMS & 1 BATH •

FOREST HILLS GARDENS

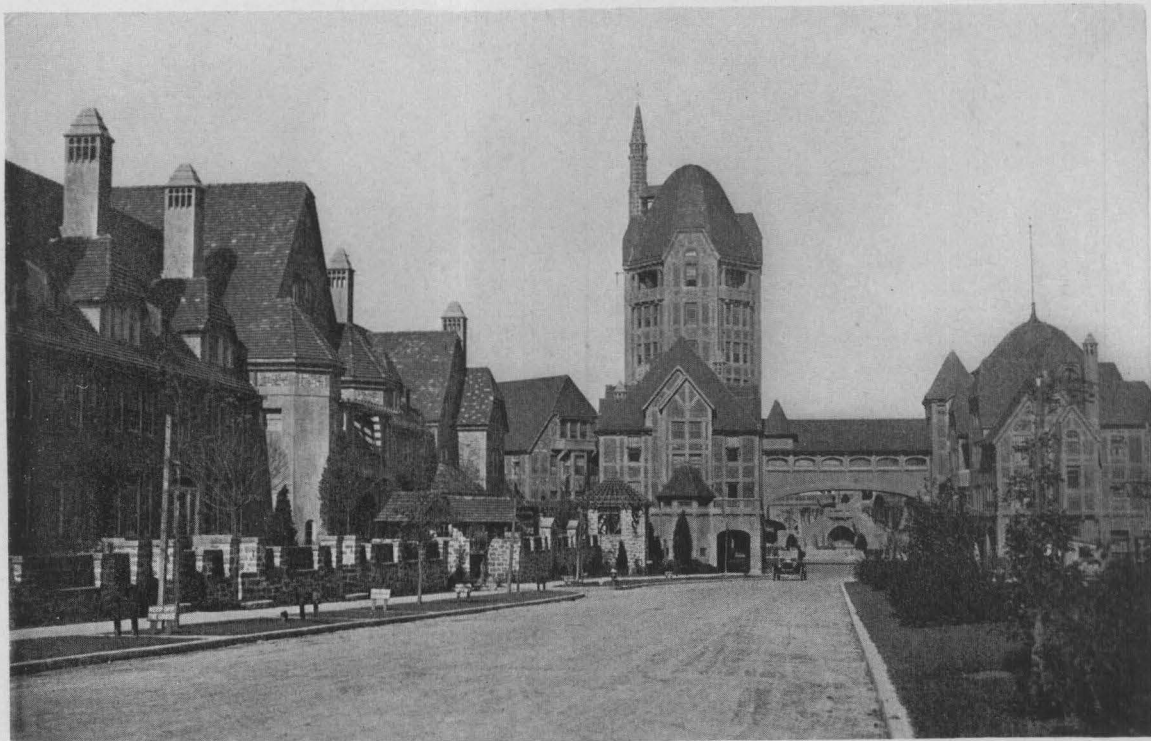


ENTRANCE TO TEA GARDEN



THE POOL IN THE TEA GARDEN

FOREST HILLS GARDENS



GREENWAY TERRACES LOOKING TOWARDS THE INN



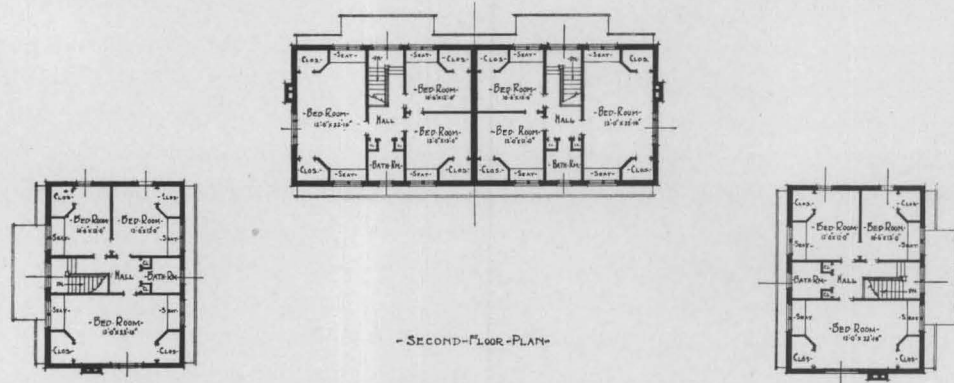
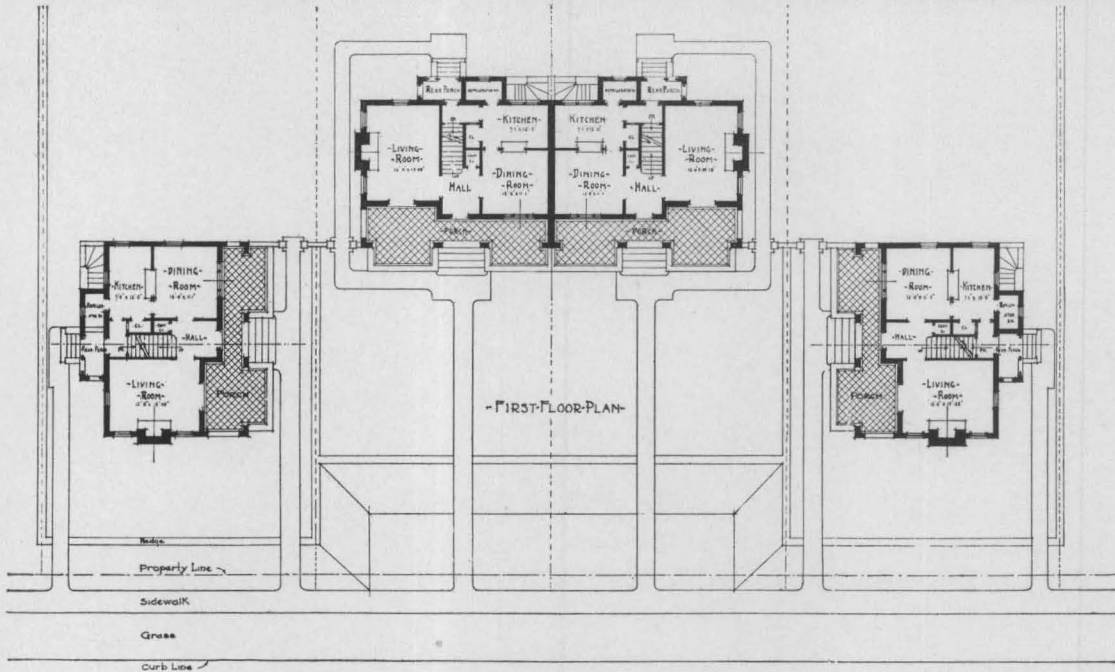
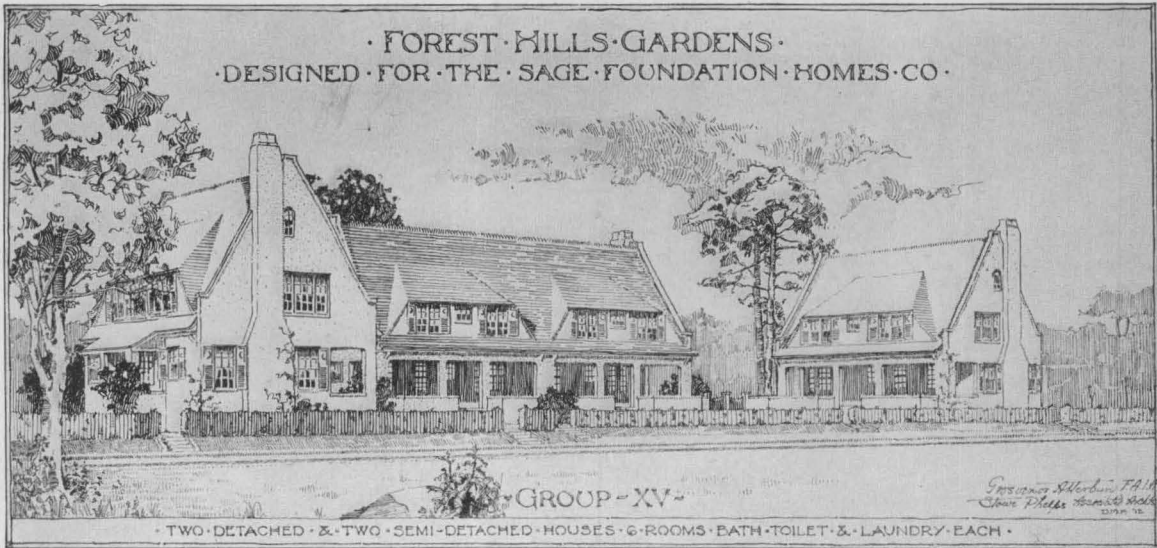
LOOKING EAST FROM THE TOWER OF THE INN

FOREST HILLS GARDENS



VIEW SHOWING BRIDGE CONNECTING THE BUILDINGS OF THE INN

FOREST HILLS GARDENS

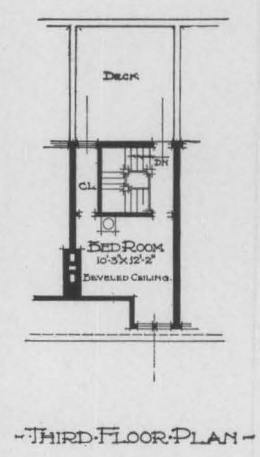
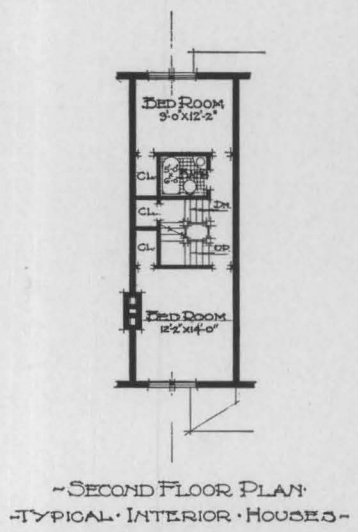
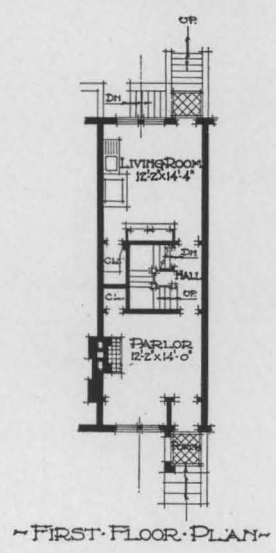
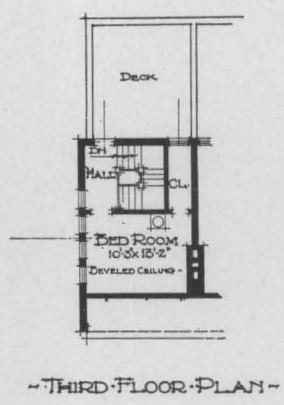
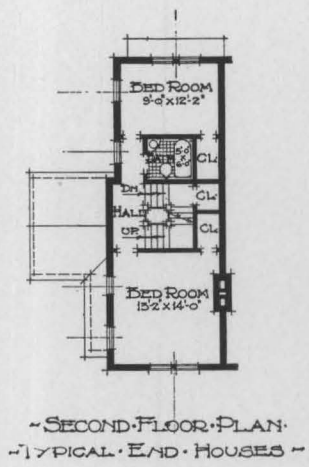
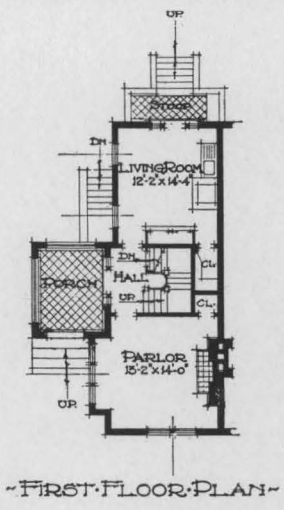


TWO DETACHED AND TWO SEMI-DETACHED HOUSES

GROUP XV

GROSVENOR ATTERBURY, F. A. I. A.
ARCHITECT

FOREST HILLS GARDENS

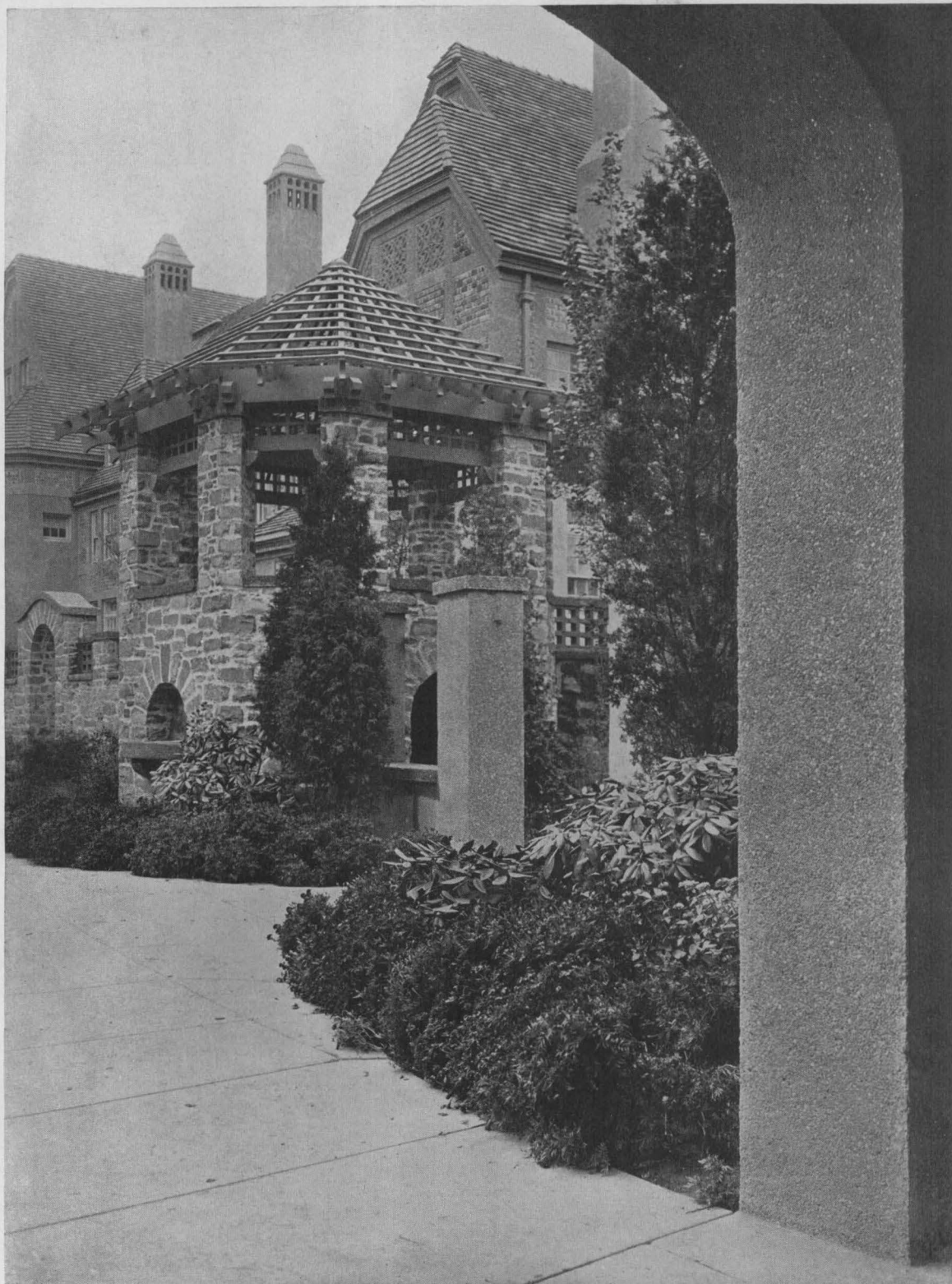


EIGHT
SINGLE FAMILY HOUSES

GROUP XVI-B

GROSVENOR ATTERBURY, F. A. I. A.
ARCHITECT

FOREST HILLS GARDENS



A VIEW OF THE GREENWAY TERRACES

FOREST HILLS GARDENS



CASCADE FOUNTAIN IN THE TEA GARDEN



ENTRANCE TO TENNIS COURT FROM TEA GARDEN

FOREST HILLS GARDENS

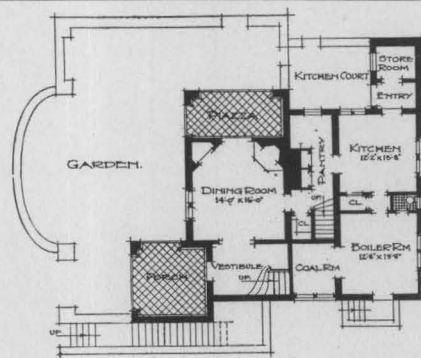


FRONT GARDENS OF GROUP VI-B

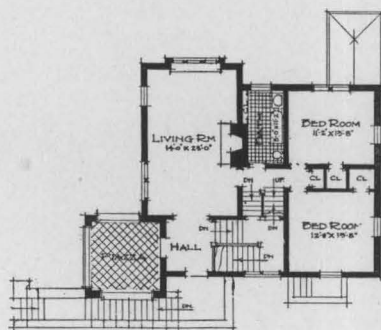
FOREST HILLS GARDENS



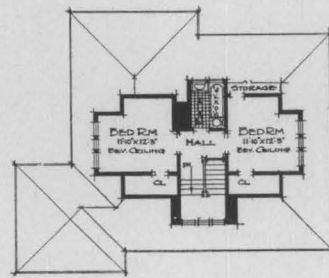
- DETACHED SINGLE-FAMILY HOUSE - 1-F-51 -
- 7-ROOMS-AND-2-BATHS -



- FIRST FLOOR PLAN -



- SECOND FLOOR PLAN -



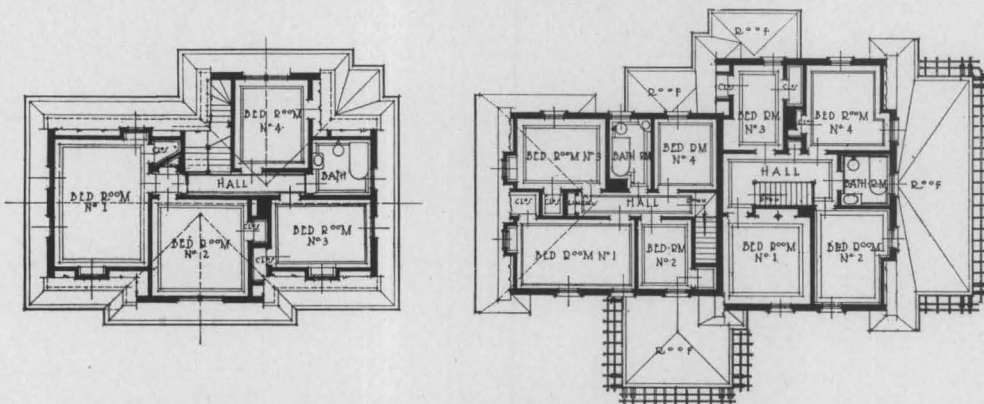
- THIRD FLOOR PLAN -

SINGLE FAMILY
DETACHED HOUSE

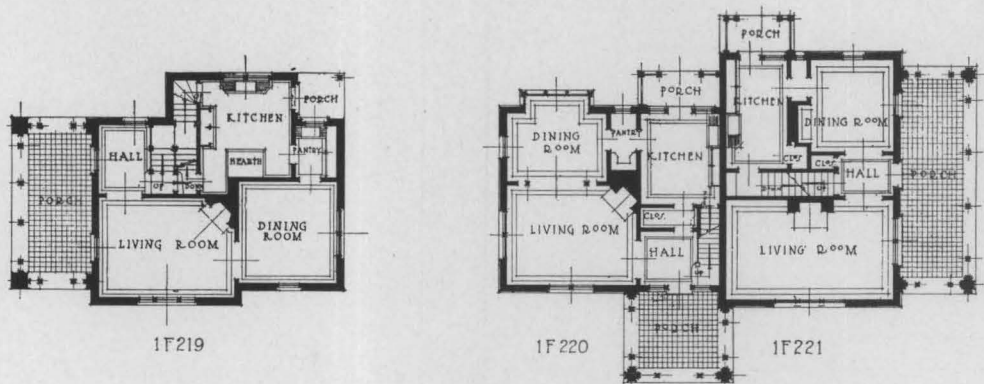
HOUSE I-F 51

GROSVENOR ATTERBURY AND JOHN A. TOMPKINS
ASSOCIATED ARCHITECTS

FOREST HILLS GARDENS



SECOND FLOOR PLANS



FIRST FLOOR PLANS

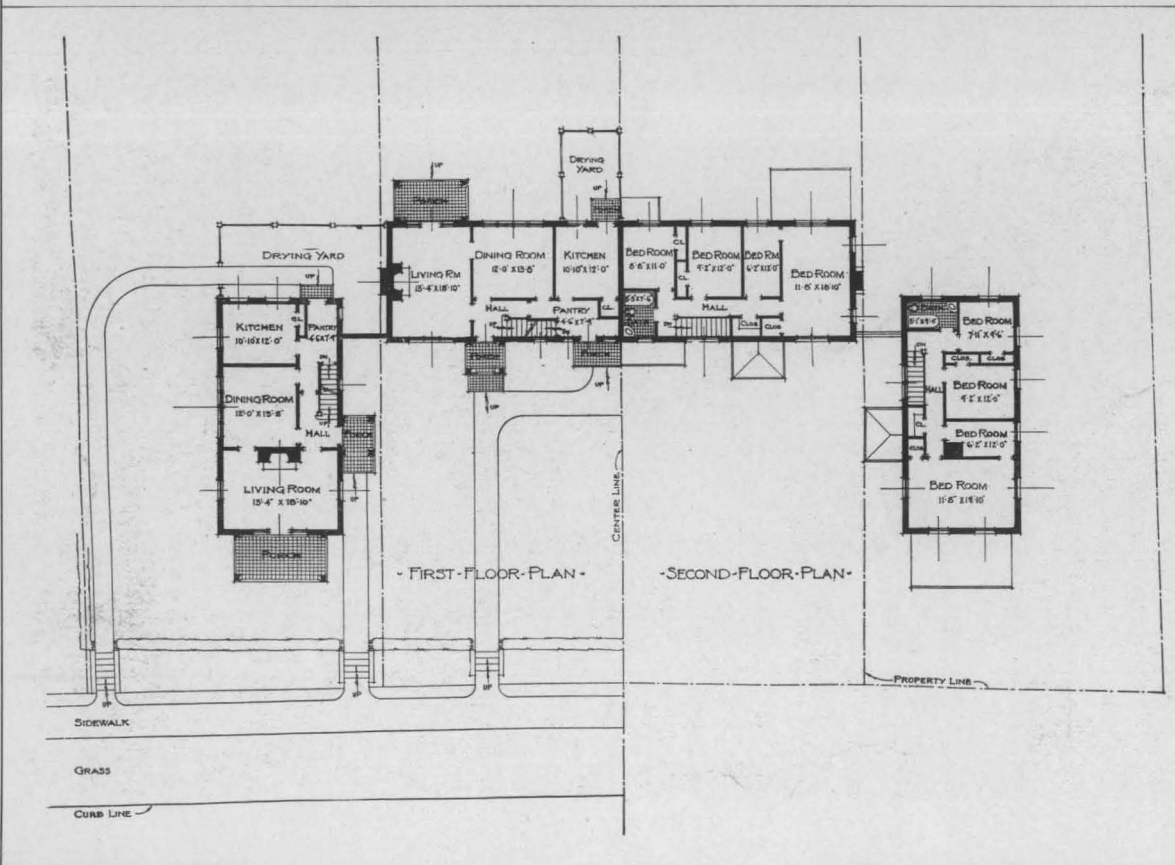
· ONE SINGLE FAMILY HOUSE · SEVEN ROOMS & BATH · · TWO SEMI-DETACHED HOUSES · SEVEN ROOMS & BATH EACH ·

ONE SINGLE FAMILY HOUSE
TWO SEMI-DETACHED HOUSES

GROUP XIV

AYMAR EMBURY
ARCHITECT

FOREST HILLS GARDENS



TWO DETACHED, TWO SEMI-DETACHED SINGLE FAMILY HOUSES

GROUP XIII

WILSON EYRE, F. A. I. A. ARCHITECT

FOREST HILLS GARDENS



GROUP XIII
LOOKING NORTH

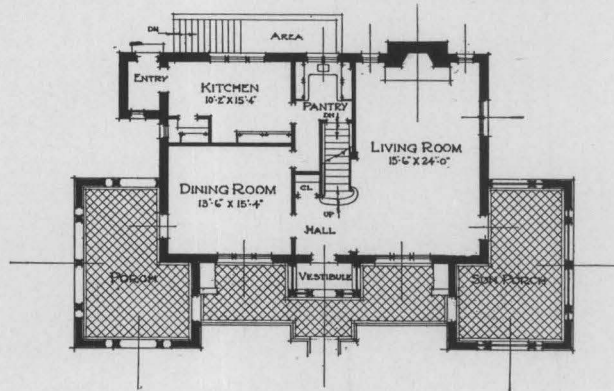


GROUP XIII
LOOKING EAST

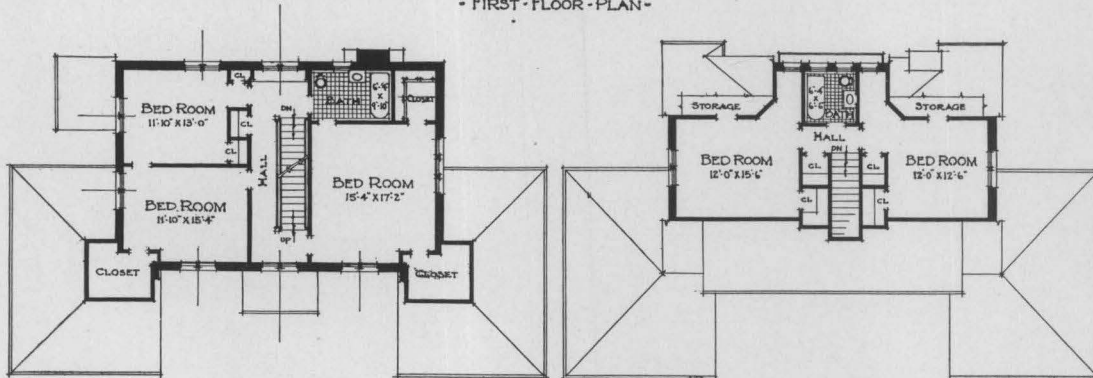
FOREST HILLS GARDENS



DETACHED SINGLE FAMILY HOUSE I-F 237—8 ROOMS AND 2 BATHS



- FIRST-FLOOR-PLAN -



- SECOND-FLOOR-PLAN -

- THIRD-FLOOR-PLAN -

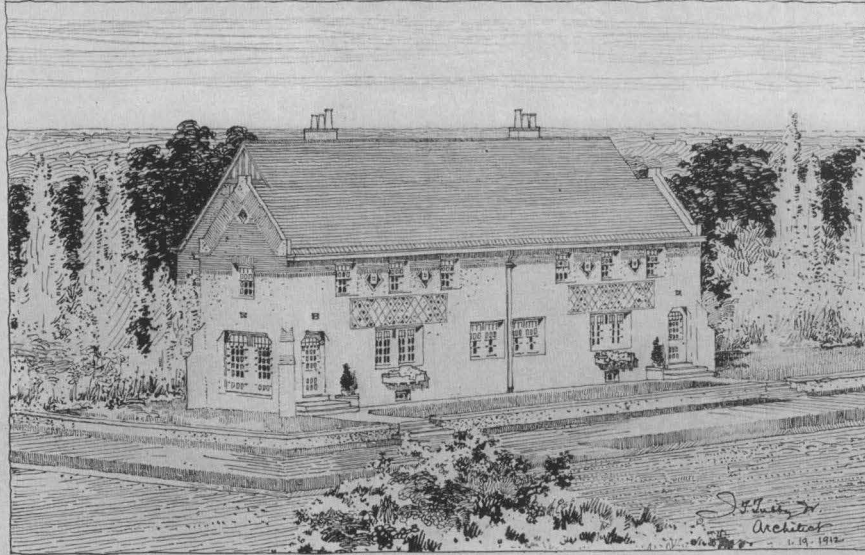
SINGLE FAMILY
DETACHED HOUSE

HOUSE I-F 237

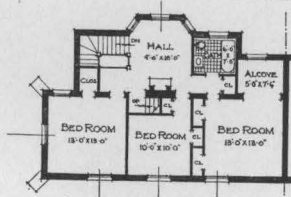
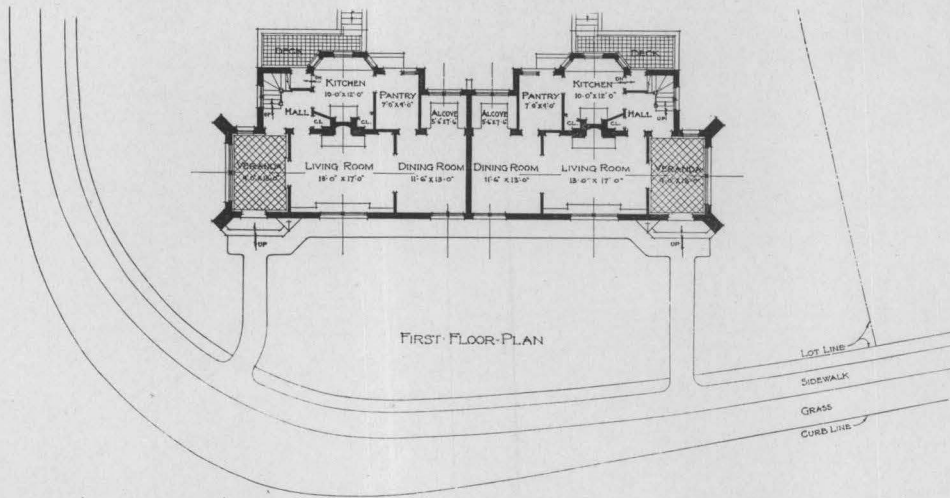
ALBRO & LINDBERG
ARCHITECTS

FOREST HILLS GARDENS

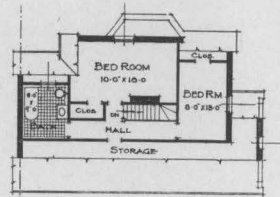
- FOREST HILLS GARDENS -
 - DESIGNED FOR THE SAGE FOUNDATION HOMES CO -



- GROUP-XXIX -
 - TWO - SEMI-DETACHED-SINGLE-FAMILY-HOUSES -
 - 8 ROOMS - & 2 BATHS - EACH -



- SECOND-FLOOR-PLAN -



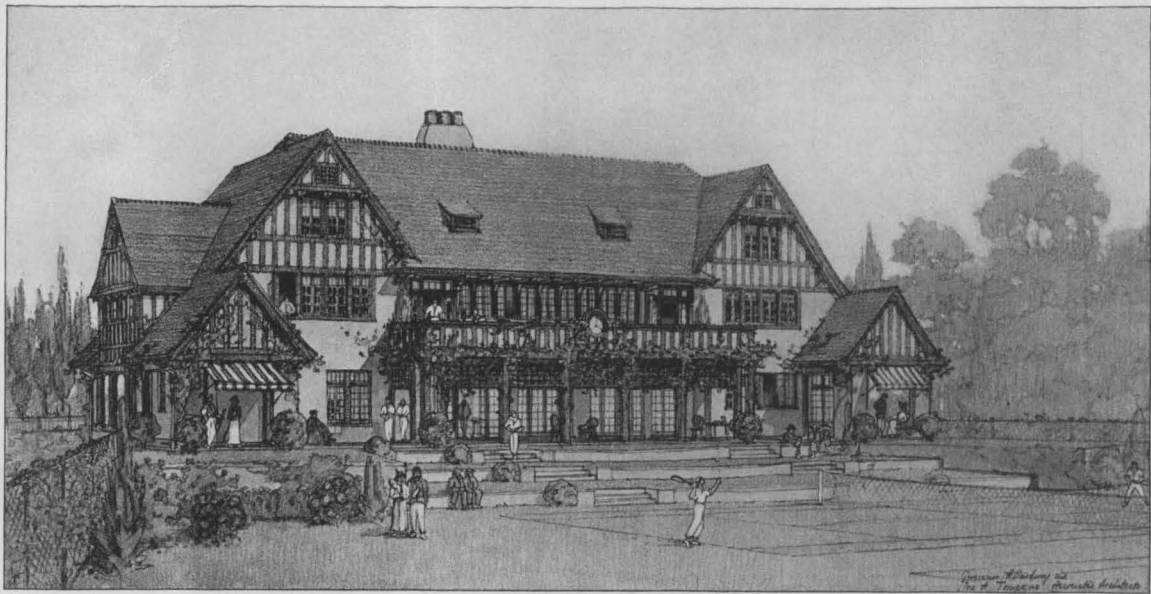
- THIRD-FLOOR-PLAN -

TWO SEMI-DETACHED
 SINGLE FAMILY HOUSES

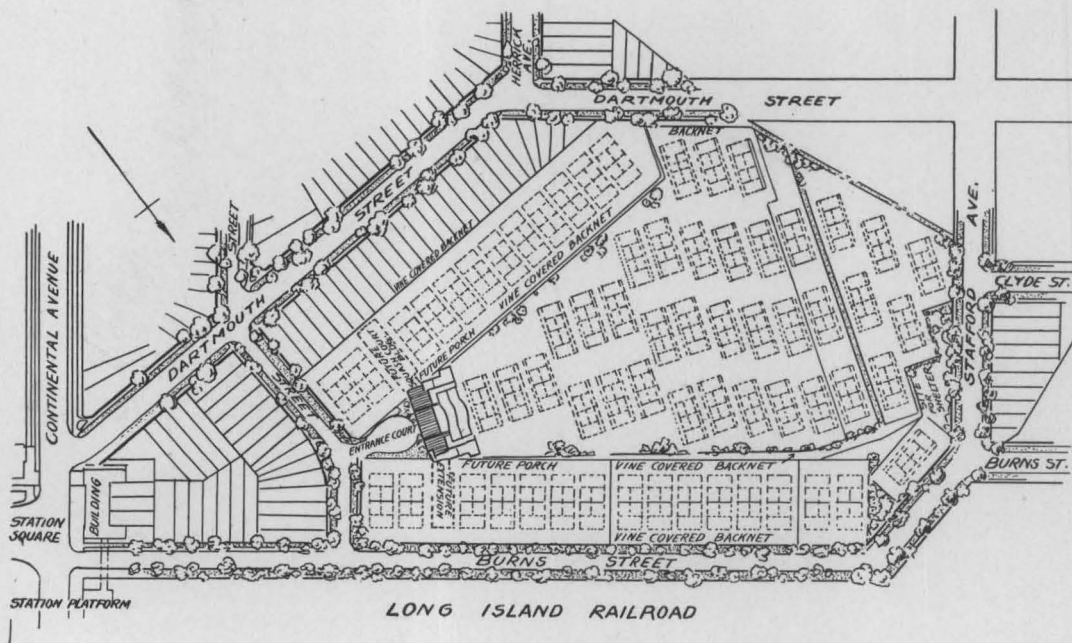
GROUP XXIX

J. T. TUBBY, JR.
 ARCHITECT

FOREST HILLS GARDENS



CLUB HOUSE AND GROUNDS
OF THE
WEST SIDE TENNIS CLUB
OF NEW YORK

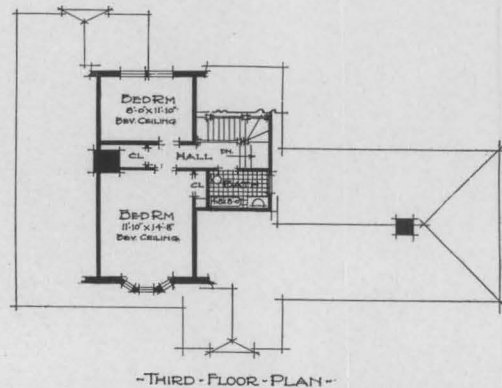
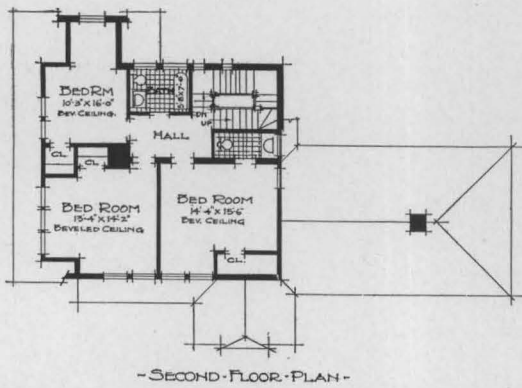
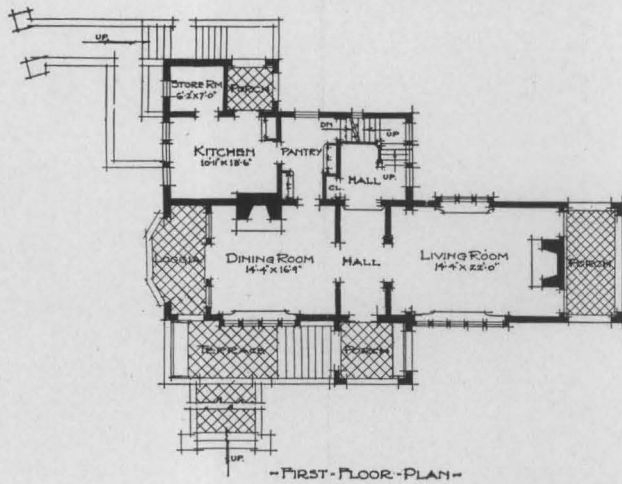


PLAN OF GROUNDS
SIXTY-THREE TENNIS COURTS

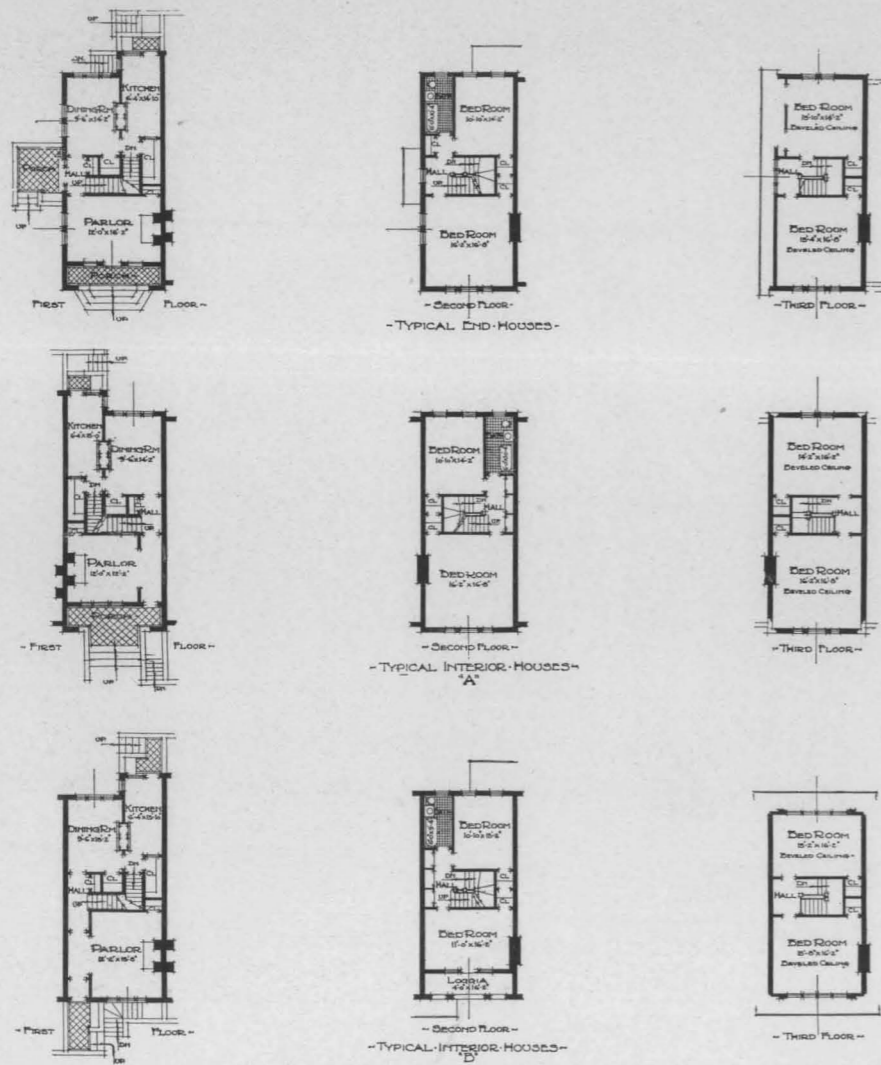
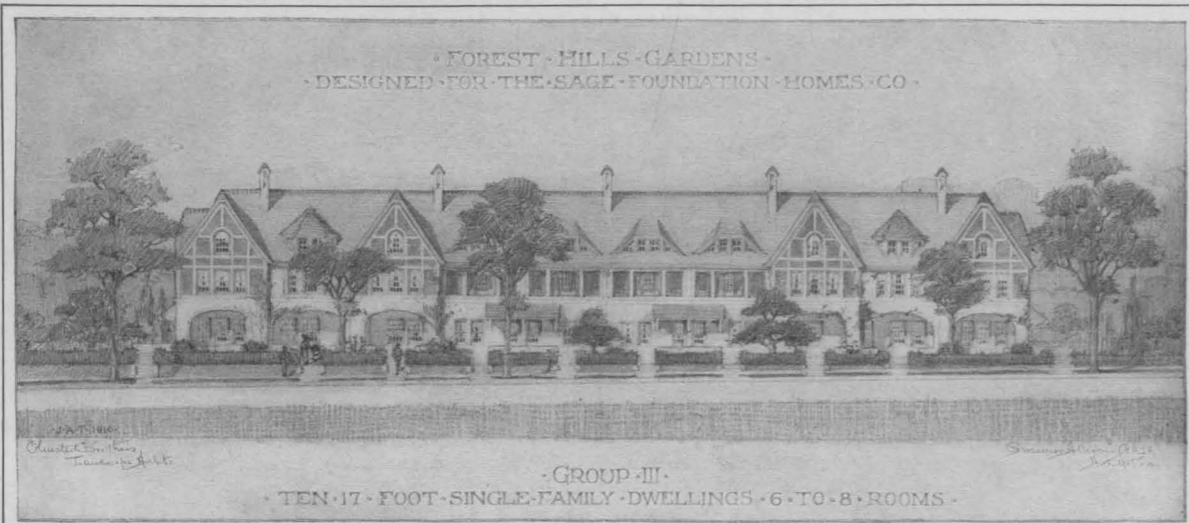
FOREST HILLS GARDENS



• DETACHED SINGLE-FAMILY-HOUSE - I-F-52 •
8-ROOMS-2-BATHS-
-AND-LAUNDRY-



FOREST HILLS GARDENS



TEN 17-FOOT SINGLE FAMILY HOUSES

GROUP III

GROSVENOR ATTERBURY F. A. I. A. ARCHITECT

FOREST HILLS GARDENS

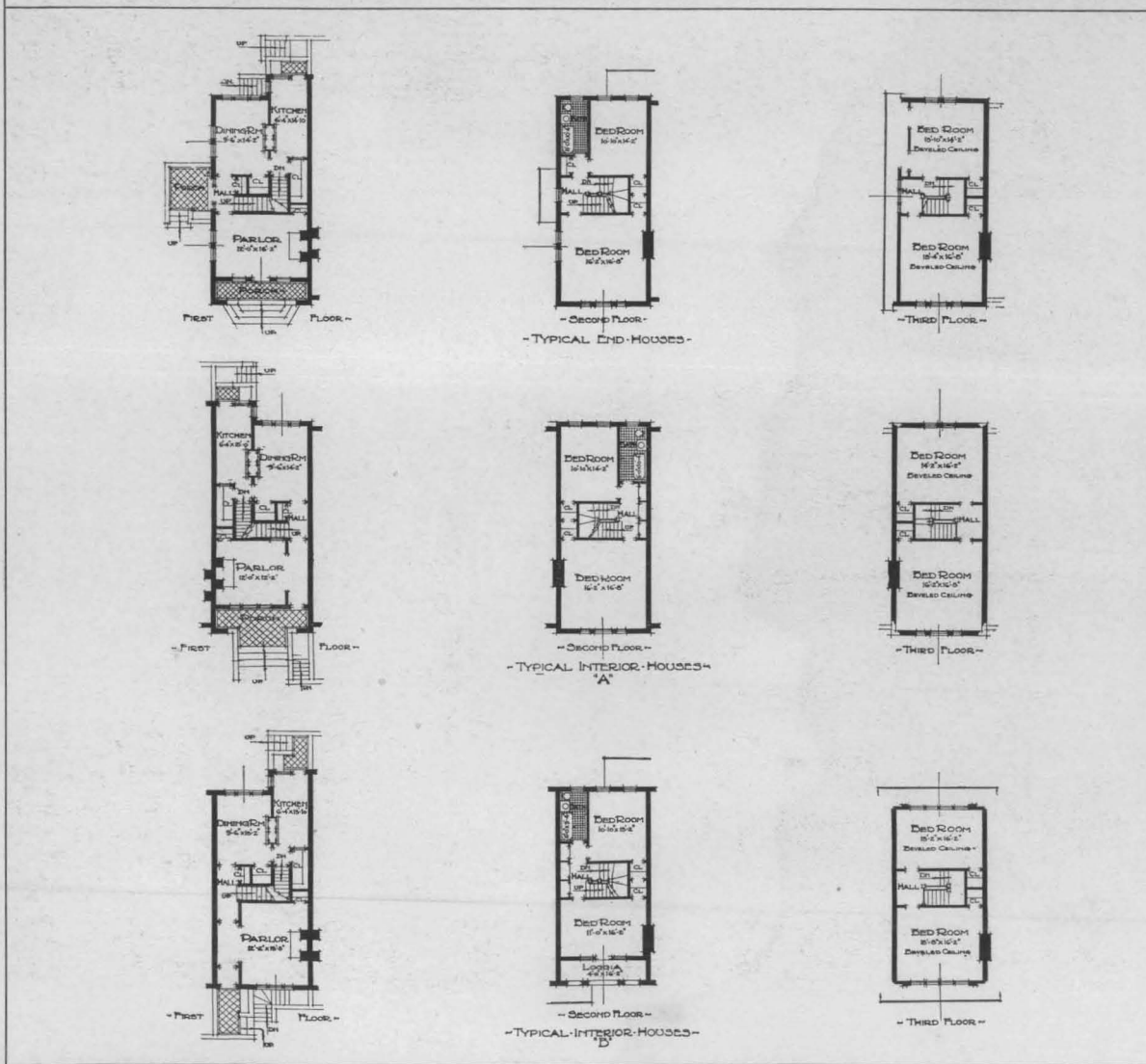
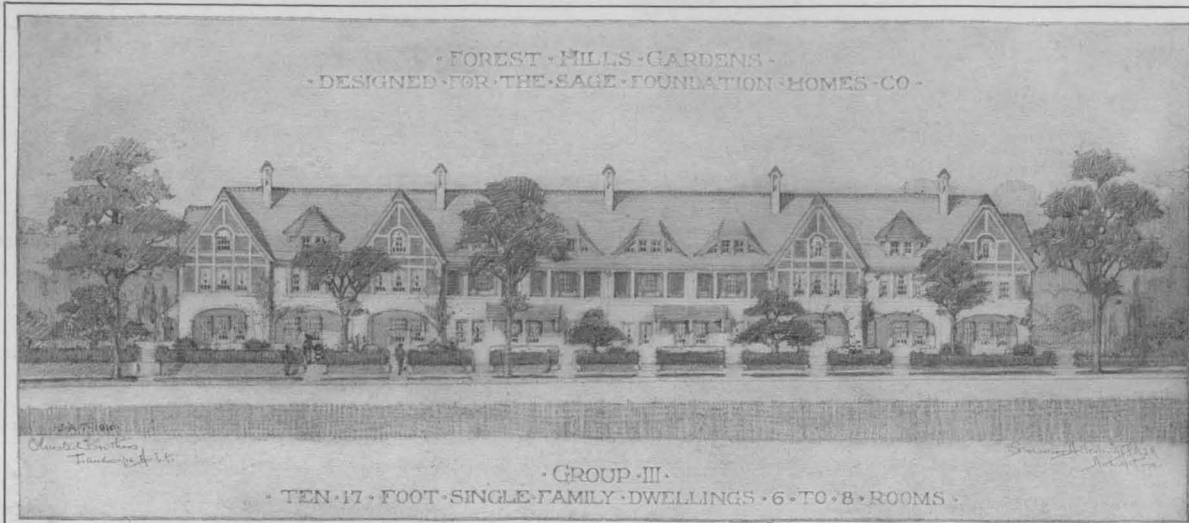


FRONT ELEVATION OF GROUP III



REAR ELEVATION OF GROUP III

FOREST HILLS GARDENS



TEN 17-FOOT SINGLE FAMILY HOUSES

GROUP III

GROSVENOR ATTERBURY F. A. I. A. ARCHITECT

FOREST HILLS GARDENS



FRONT ELEVATION OF GROUP III



REAR ELEVATION OF GROUP III

FOREST HILLS GARDENS

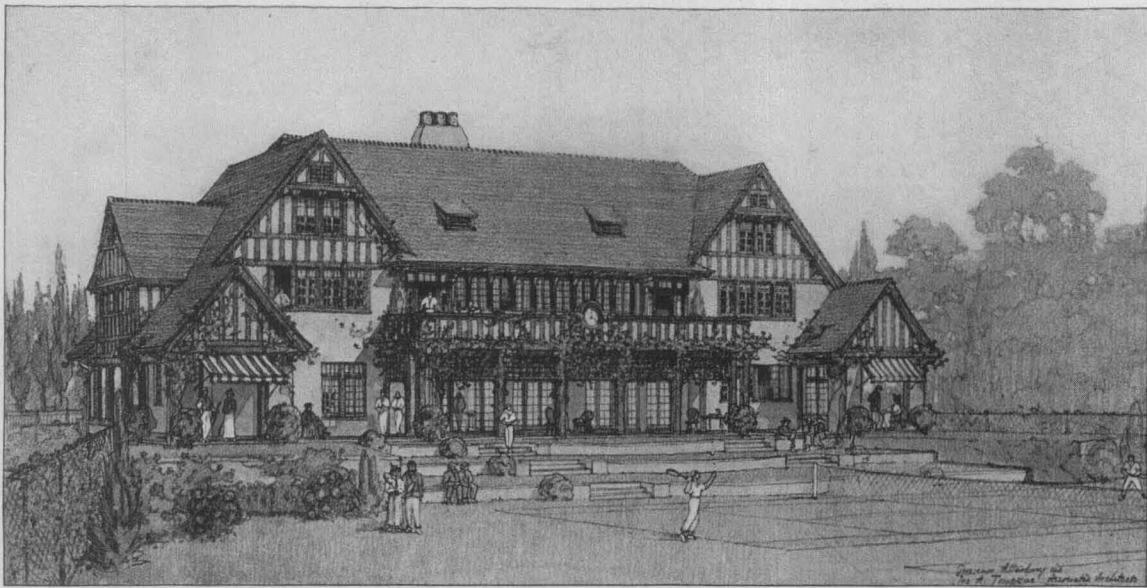


GREENWAY NORTH AND GOODWOOD ROAD
LOOKING NORTH

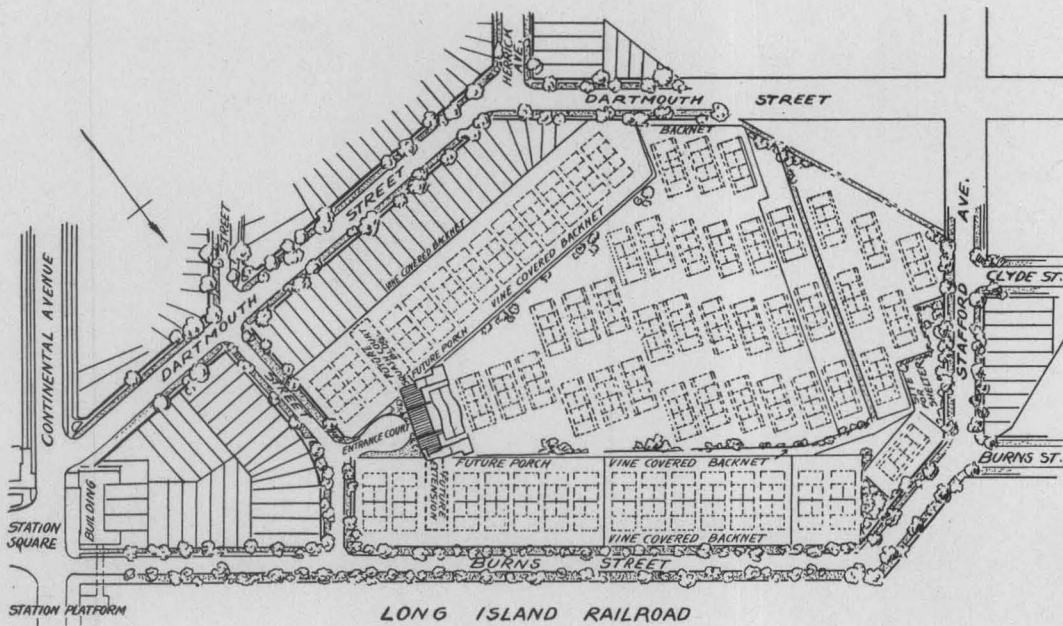


PARK IN BLOCK XLII

FOREST HILLS GARDENS

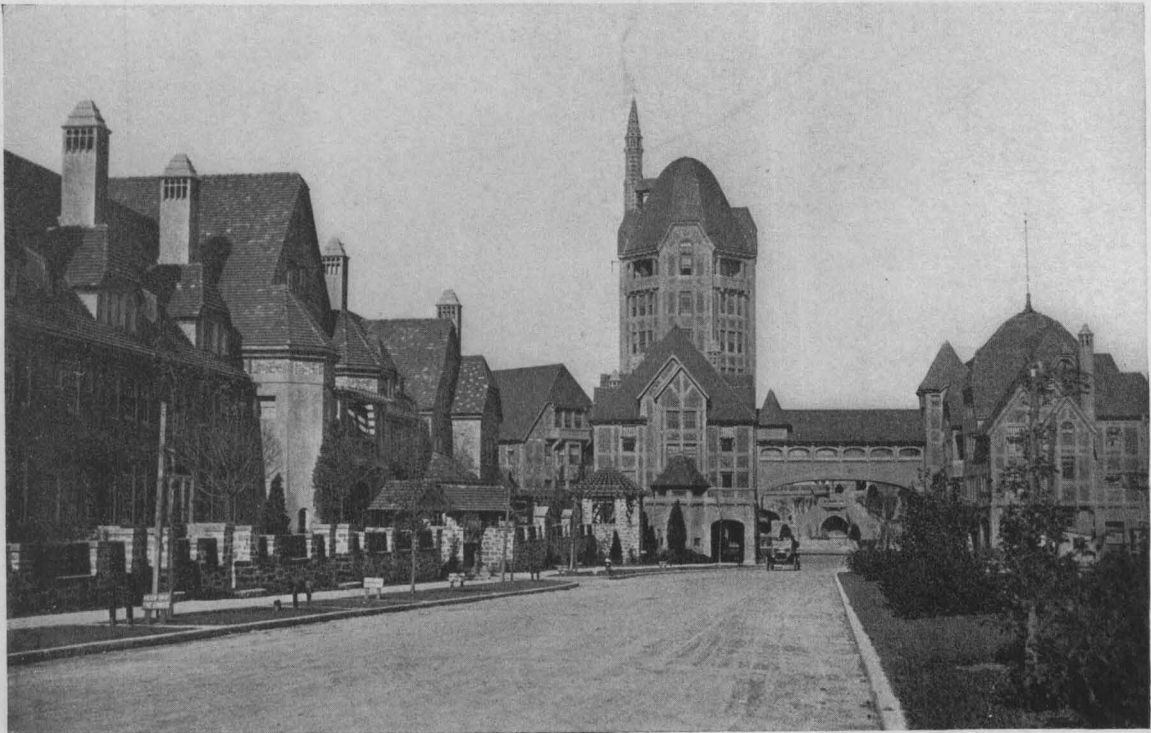


CLUB HOUSE AND GROUNDS
OF THE
WEST SIDE TENNIS CLUB
OF NEW YORK



PLAN OF GROUNDS
SIXTY-THREE TENNIS COURTS

FOREST HILLS GARDENS

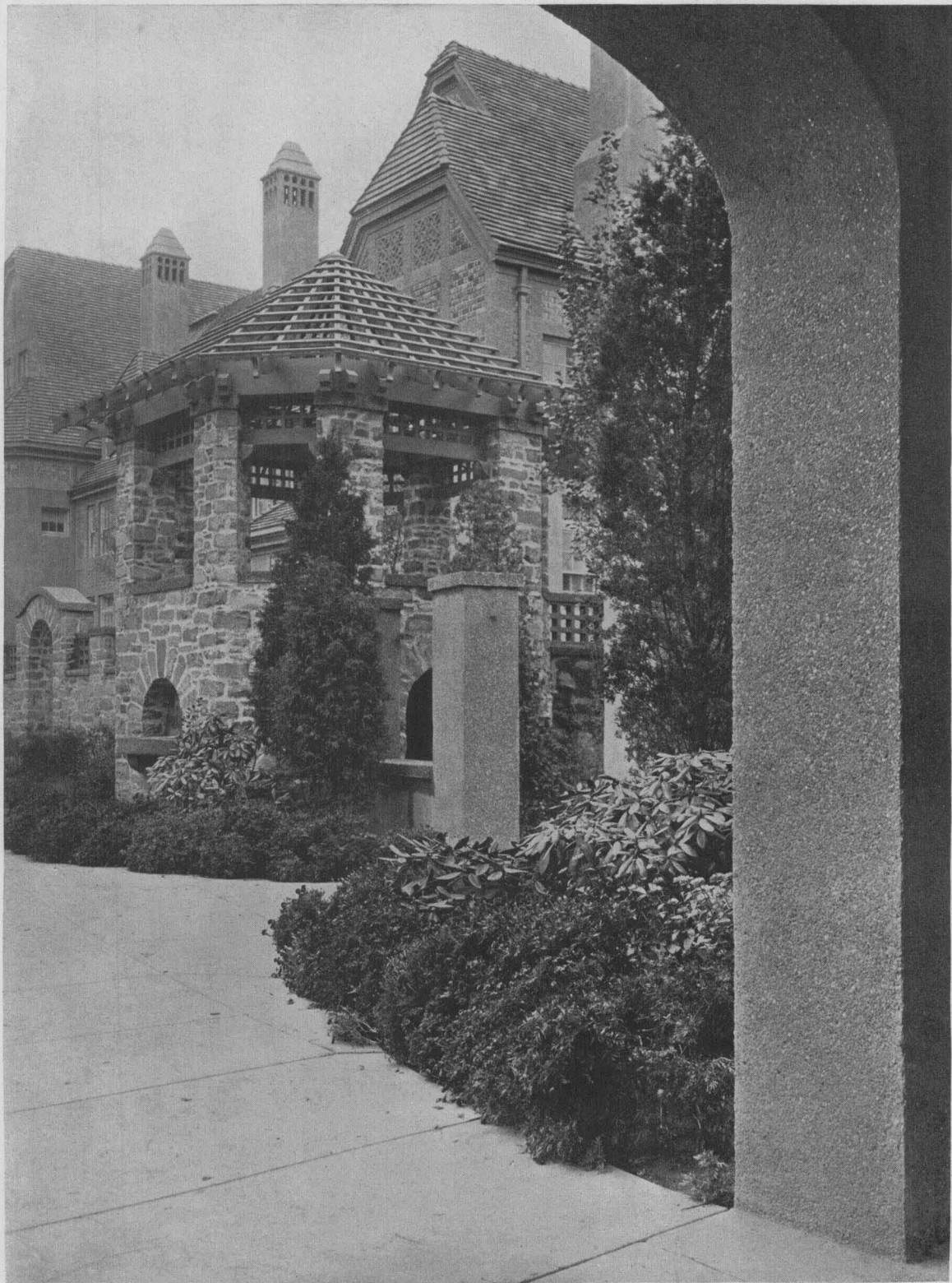


GREENWAY TERRACES LOOKING TOWARDS THE INN



LOOKING EAST FROM THE TOWER OF THE INN

FOREST HILLS GARDENS



A VIEW OF THE GREENWAY TERRACES

FOREST HILLS GARDENS



PARK IN BLOCK XLII



HOUSE I-F-240

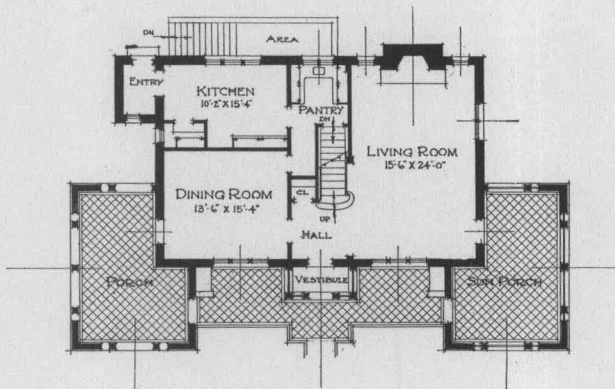
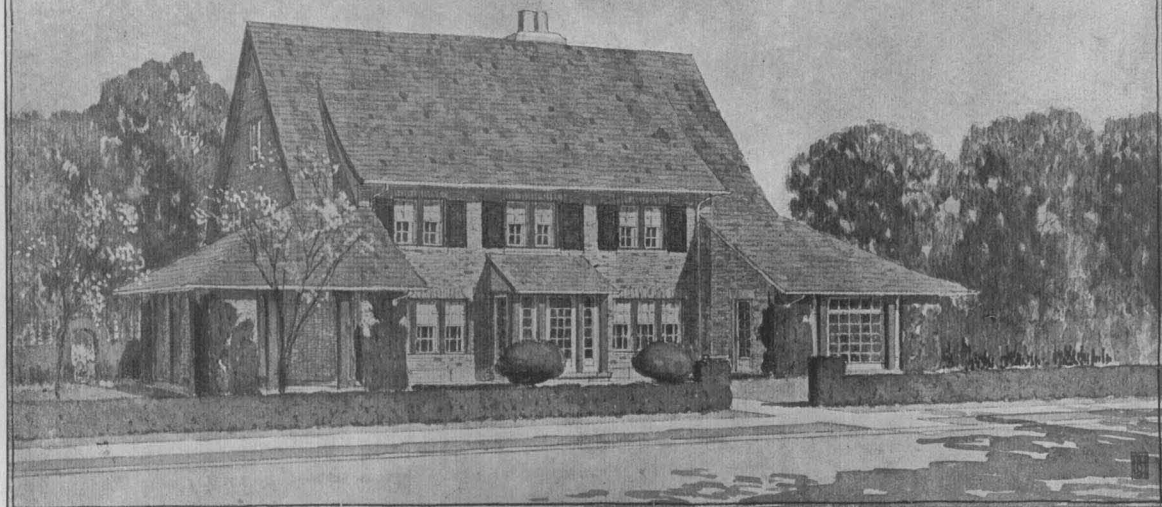
SINGLE FAMILY DETACHED
HOUSE

HOUSE I-F-240

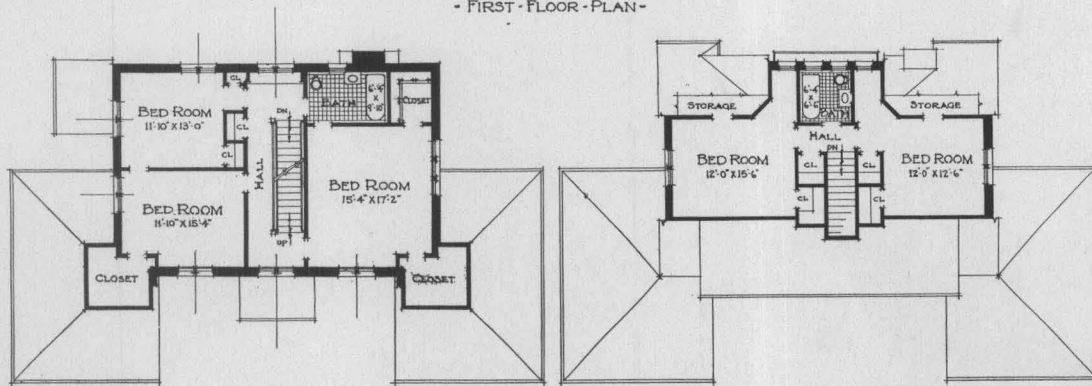
GROSVENOR ATTERBURY, F. A. I. A.
ARCHITECT

FOREST HILLS GARDENS

- FOREST HILLS GARDENS -
 - DESIGNED FOR THE SAGE FOUNDATION HOMES CO -
 - 1F237 - EIGHT ROOMS - & - TWO BATHS -



- FIRST FLOOR PLAN -



- SECOND FLOOR PLAN -

- THIRD FLOOR PLAN -

SINGLE FAMILY
 DETACHED HOUSE

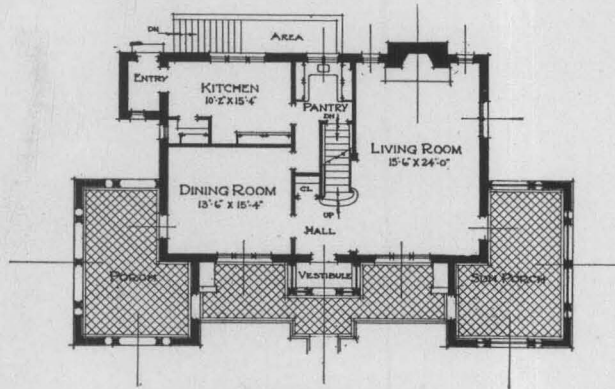
HOUSE I-F 237

ALBRO & LINDBERG
 ARCHITECTS

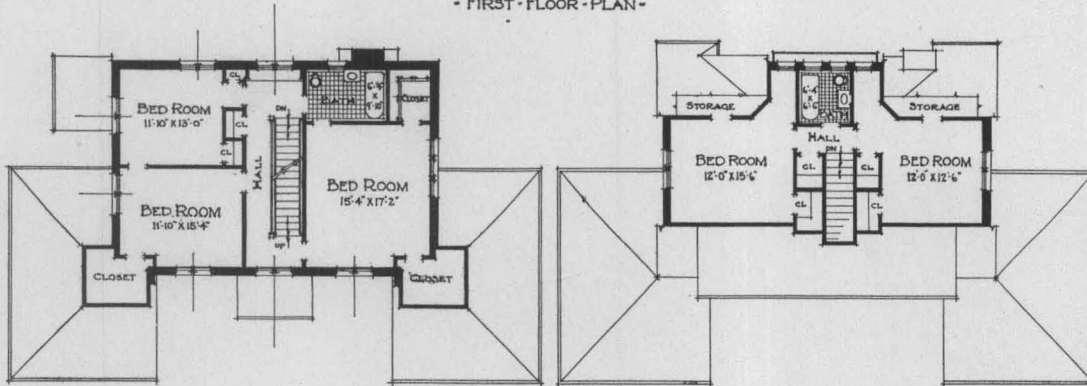
FOREST HILLS GARDENS



DETACHED SINGLE FAMILY HOUSE I-F 237—8 ROOMS AND 2 BATHS



- FIRST-FLOOR-PLAN -



- SECOND-FLOOR-PLAN -

- THIRD-FLOOR-PLAN -

SINGLE FAMILY
DETACHED HOUSE

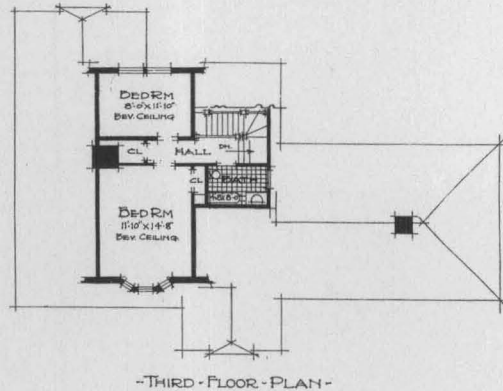
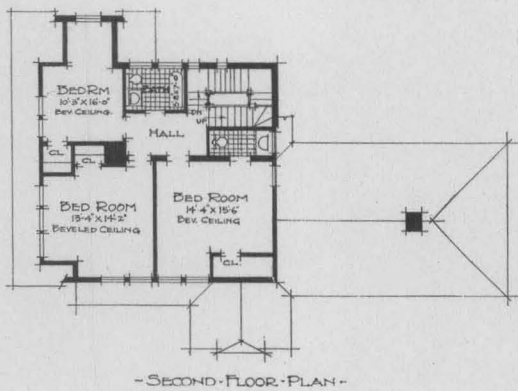
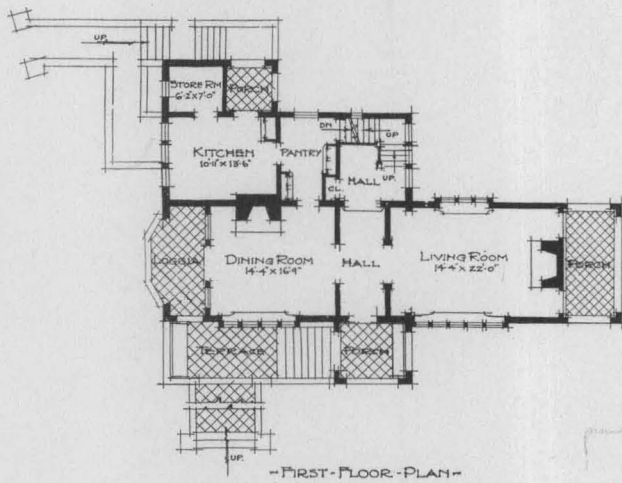
HOUSE I-F 237

ALBRO & LINDBERG
ARCHITECTS

FOREST HILLS GARDENS



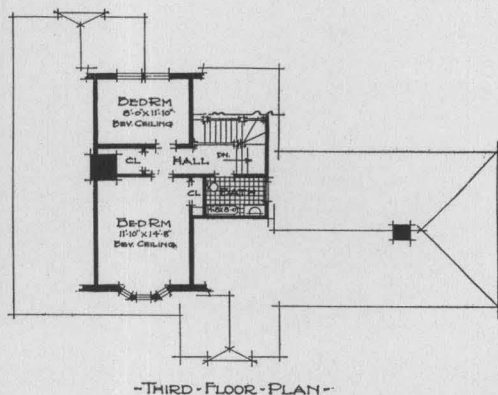
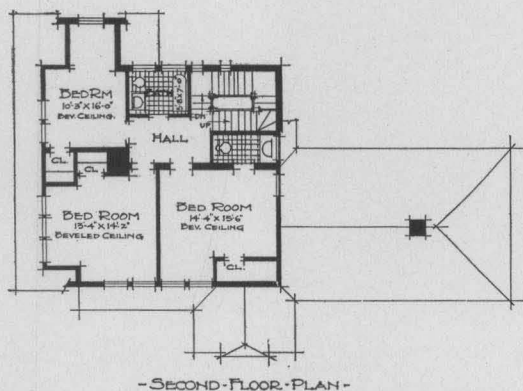
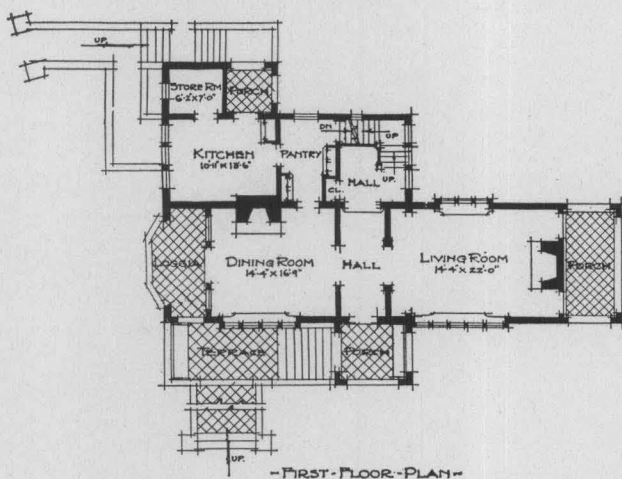
· DETACHED SINGLE-FAMILY-HOUSE · 1-F-52 ·
8-ROOMS-2-BATHS ·
-AND-LAUNDRY-



FOREST HILLS GARDENS



- DETACHED SINGLE-FAMILY-HOUSE - 1-F-52 -
 8-ROOMS-2-BATHS -
 -AND-LAUNDRY-



SINGLE FAMILY
 DETACHED HOUSE

HOUSE I-F 52

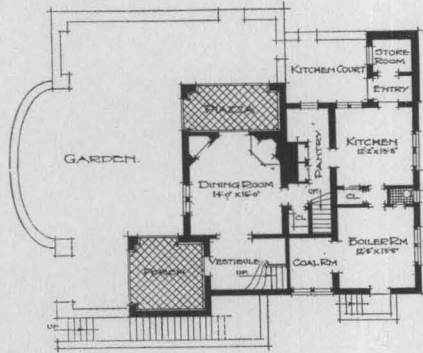
GROSVENOR ATTERBURY AND JOHN A. TOMPKINS
 ASSOCIATED ARCHITECTS

FOREST HILLS GARDENS

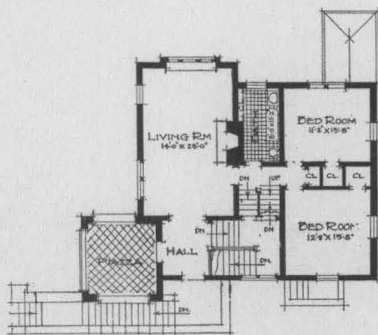


FOREST HILLS GARDENS ·
DESIGNED FOR THE SAGE FOUNDATION HOMES CO.

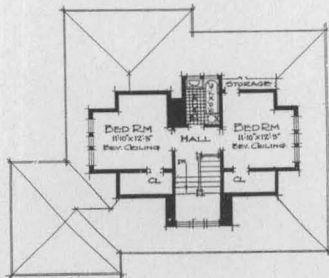
· DETACHED SINGLE-FAMILY HOUSE · I-F-51 ·
· 7 ROOMS AND 2 BATHS ·



- FIRST-FLOOR-PLAN -



- SECOND-FLOOR-PLAN -



- THIRD-FLOOR-PLAN -

SINGLE FAMILY
DETACHED HOUSE

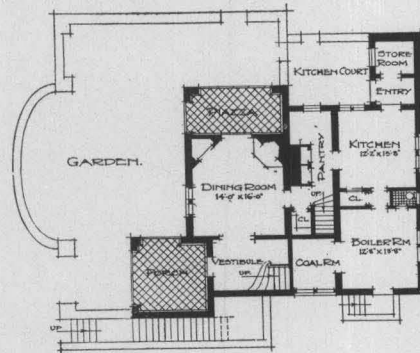
HOUSE I-F 51

GROSVENOR ATTERBURY AND JOHN A. TOMPKINS
ASSOCIATED ARCHITECTS

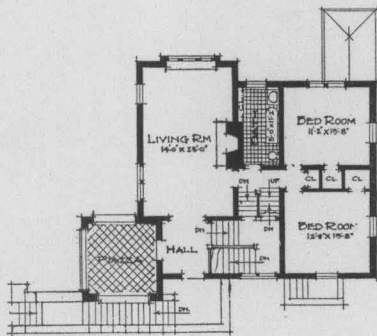
FOREST HILLS GARDENS



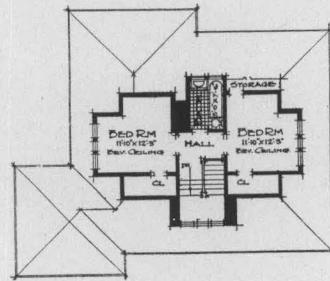
• DETACHED SINGLE-FAMILY HOUSE • 1-F-51 •
 - 7 ROOMS AND 2 BATHS -



- FIRST FLOOR PLAN -



- SECOND FLOOR PLAN -



- THIRD FLOOR PLAN -

SINGLE FAMILY
 DETACHED HOUSE

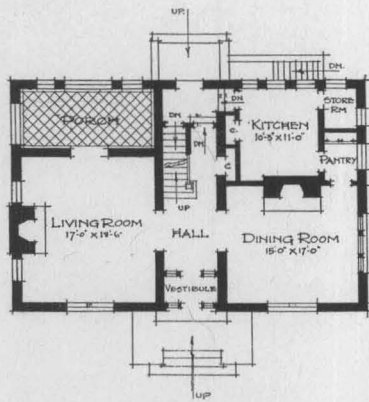
HOUSE I-F 51

GROSVENOR ATTERBURY AND JOHN A. TOMPKINS
 ASSOCIATED ARCHITECTS

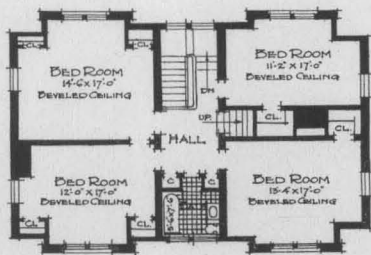
FOREST HILLS GARDENS



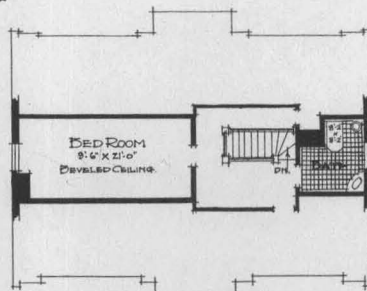
• DETACHED • SINGLE • FAMILY • HOUSE • 1 • F • 50 •
• 8 • ROOMS • 2 • BATHS • AND • LAUNDRY •



- FIRST FLOOR PLAN -



- SECOND FLOOR PLAN -



- THIRD FLOOR PLAN -

SINGLE FAMILY
DETACHED HOUSE

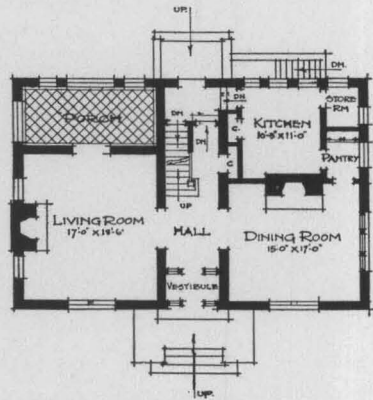
HOUSE I-F-50

GROSVENOR ATTERBURY, F. A. I. A.
ARCHITECT

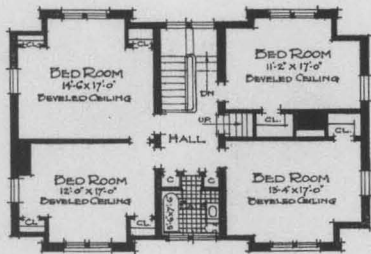
FOREST HILLS GARDENS



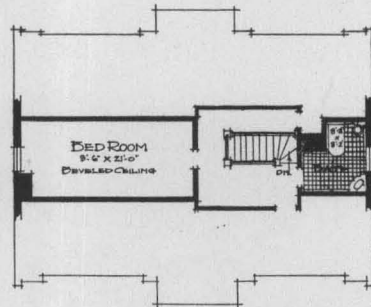
• DETACHED • SINGLE • FAMILY • HOUSE • 1 • F • 50 •
• 8 • ROOMS • 2 • BATHS • AND • LAUNDRY •



- FIRST FLOOR PLAN -



- SECOND FLOOR PLAN -



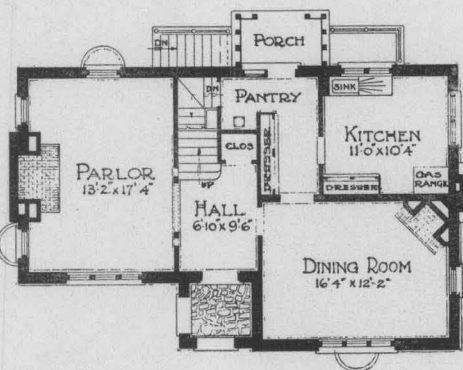
- THIRD FLOOR PLAN -

SINGLE FAMILY
DETACHED HOUSE

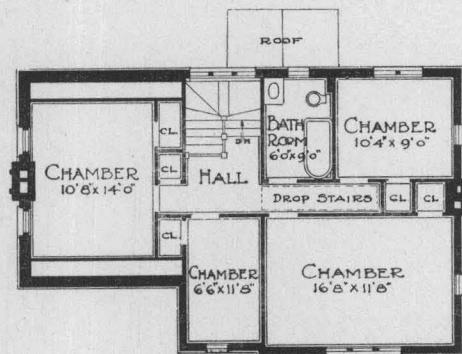
HOUSE I-F-50

GROSVENOR ATTERBURY, F.A.I.A.
ARCHITECT

FOREST HILLS GARDENS



- FIRST FLOOR PLAN -



- SECOND FLOOR PLAN -

- SAGE FOUNDATION HOMES CO. OWNERS -

- 1 DETACHED SINGLE FAMILY HOUSE -
- 7 ROOMS & 1 BATH -

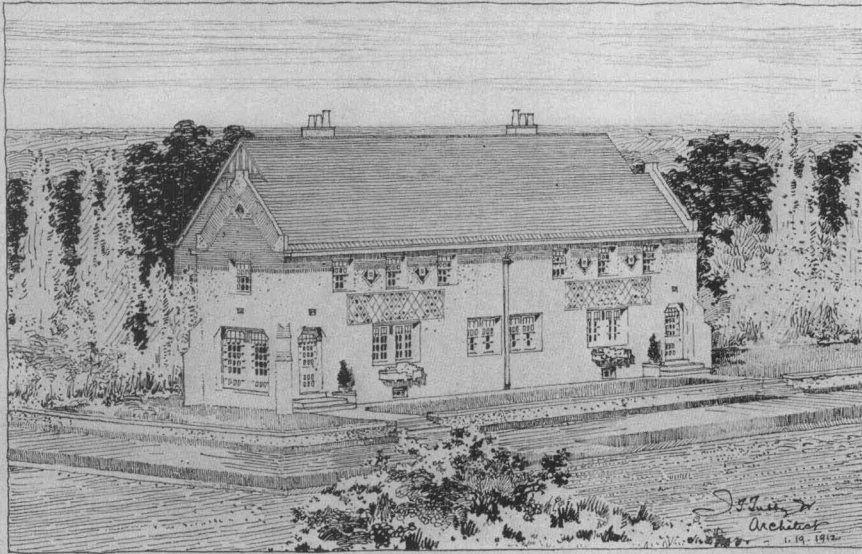
ONE DETACHED
SINGLE FAMILY HOUSE

HOUSE I-F 218

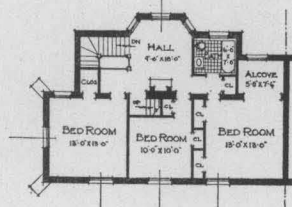
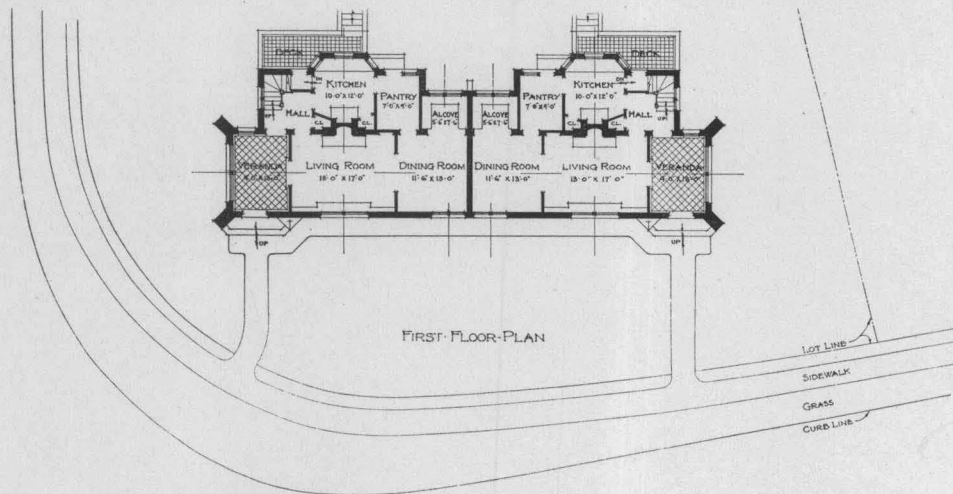
F. J. STERNER
ARCHITECT

FOREST HILLS GARDENS

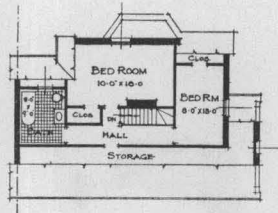
- FOREST HILLS GARDENS -
 - DESIGNED FOR THE SAGE FOUNDATION HOMES CO -



- GROUP XXIX -
 - TWO SEMI-DETACHED SINGLE-FAMILY HOUSES -
 - 3 BEDROOMS - & 2 BATHS - EACH -



- SECOND-FLOOR-PLAN -



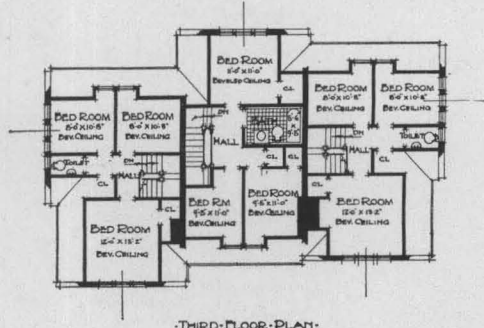
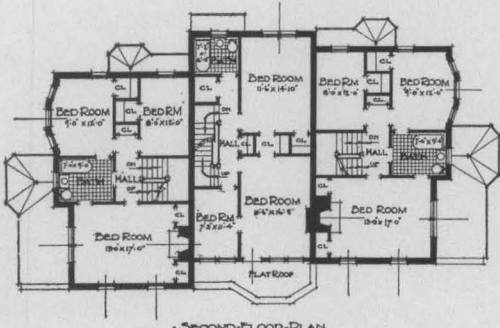
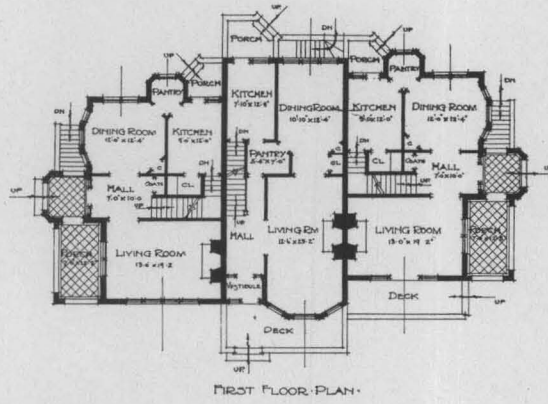
- THIRD-FLOOR-PLAN -

TWO SEMI-DETACHED
 SINGLE FAMILY HOUSES

GROUP XXIX

J. T. TUBBY, JR.
 ARCHITECT

FOREST HILLS GARDENS

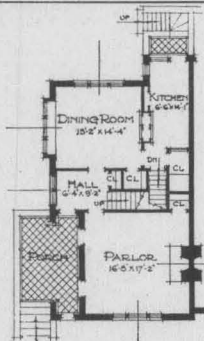
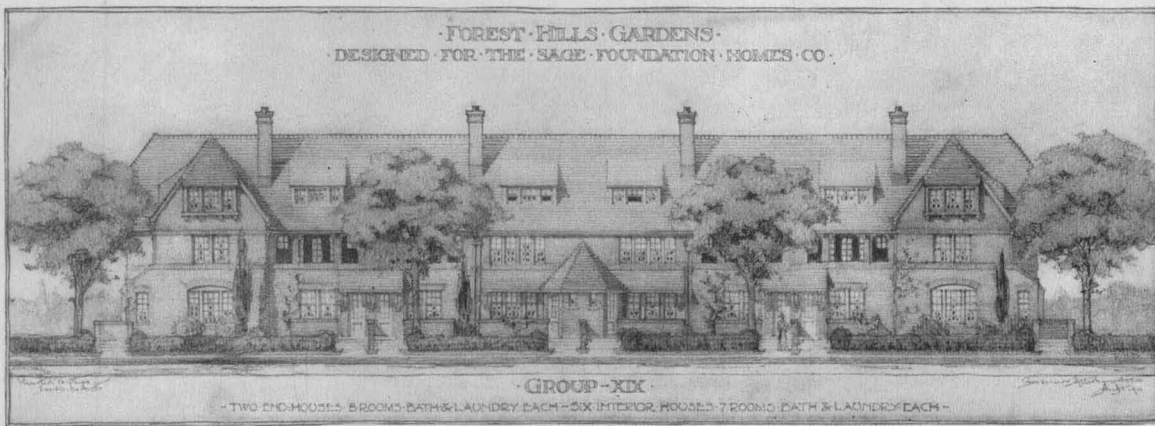


ONE INTERIOR, TWO SEMI-DETACHED HOUSES

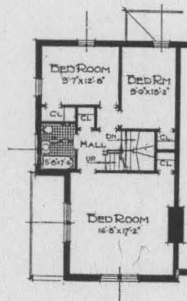
GROUP XX

GROSVENOR ATTERBURY, F. A. I. A ARCHITECT

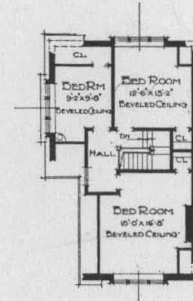
FOREST HILLS GARDENS



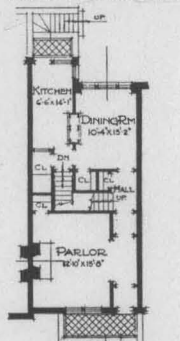
FIRST FLOOR PLAN



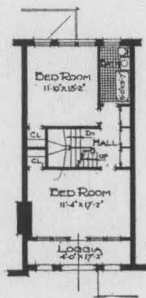
SECOND FLOOR PLAN - END HOUSES -



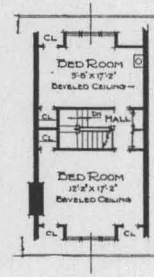
THIRD FLOOR PLAN -



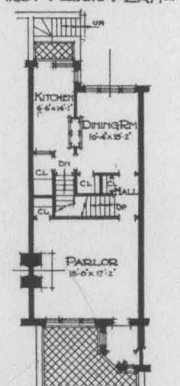
FIRST FLOOR PLAN -



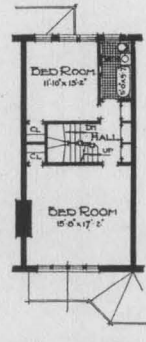
SECOND FLOOR PLAN - INTERIOR HOUSES -



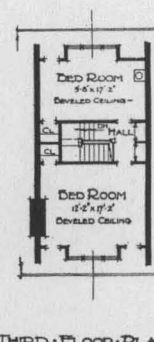
THIRD FLOOR PLAN -



FIRST FLOOR PLAN



SECOND FLOOR PLAN - INTERIOR HOUSES -



THIRD FLOOR PLAN -

EIGHT 18-FOOT AND 20-FOOT
SINGLE FAMILY HOUSES

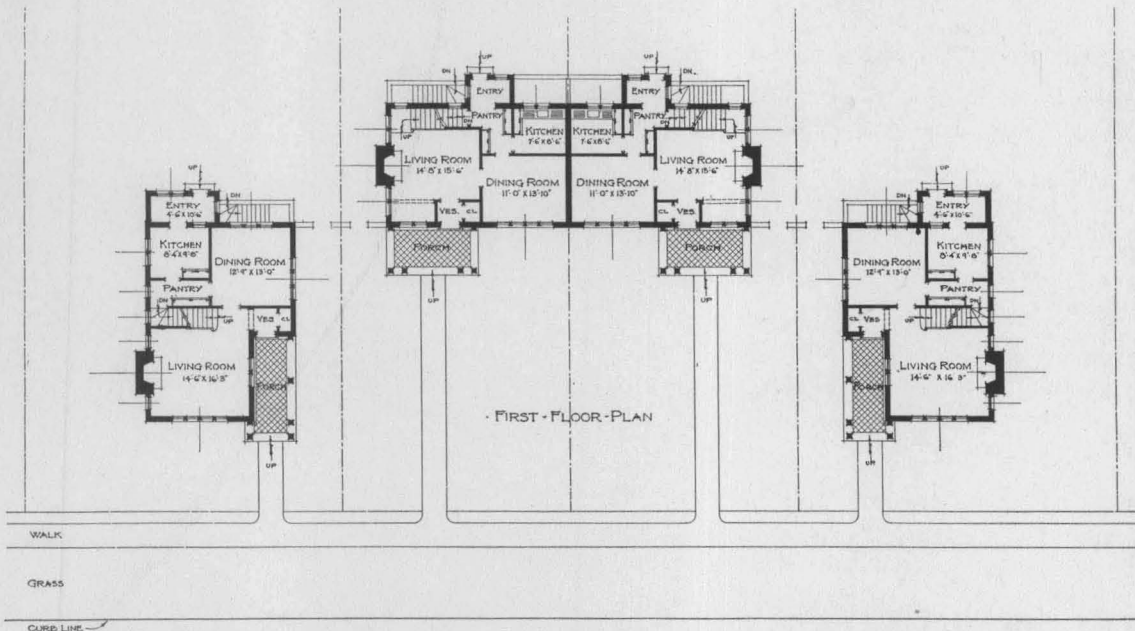
GROUP XIX

GROSVENOR ATTERBURY, F. A. I. A.
ARCHITECT

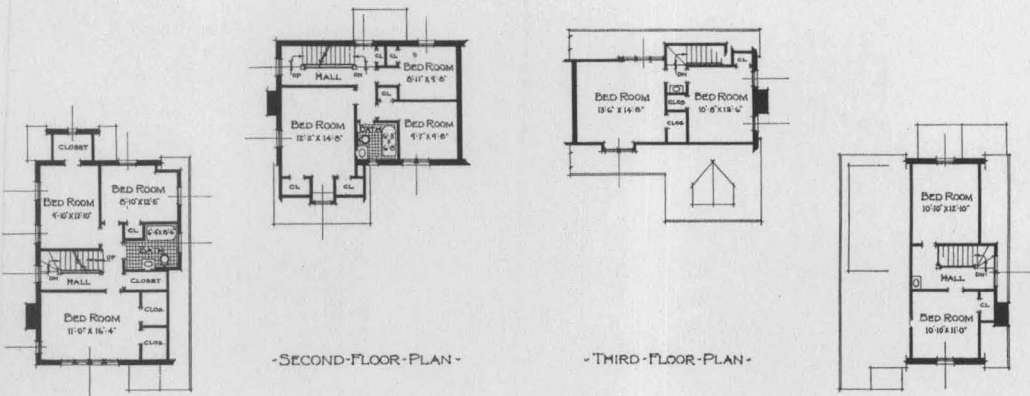
FOREST HILLS GARDENS



FOREST HILLS GARDENS
 DESIGNED FOR THE SAGE FOUNDATION HOMES CO.
 BY CLYDE CROWELL
 FOUR HOUSES - THREE 3 ROOMS - 2 BATH EACH



FIRST FLOOR PLAN



SECOND FLOOR PLAN

THIRD FLOOR PLAN

TWO DETACHED, TWO SEMI-DETACHED
 SINGLE FAMILY HOUSES

GROUP XXVIII

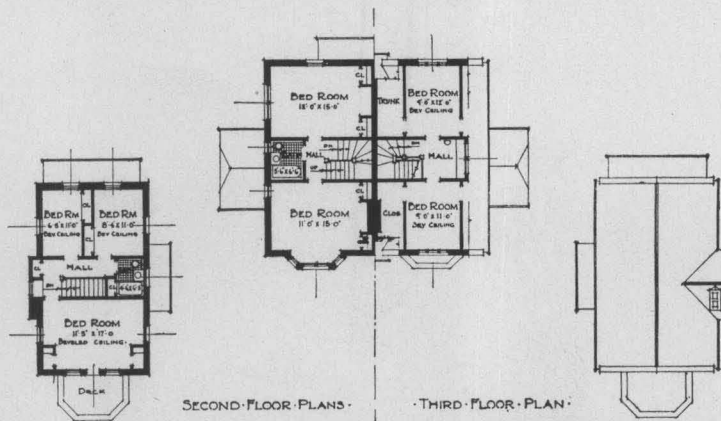
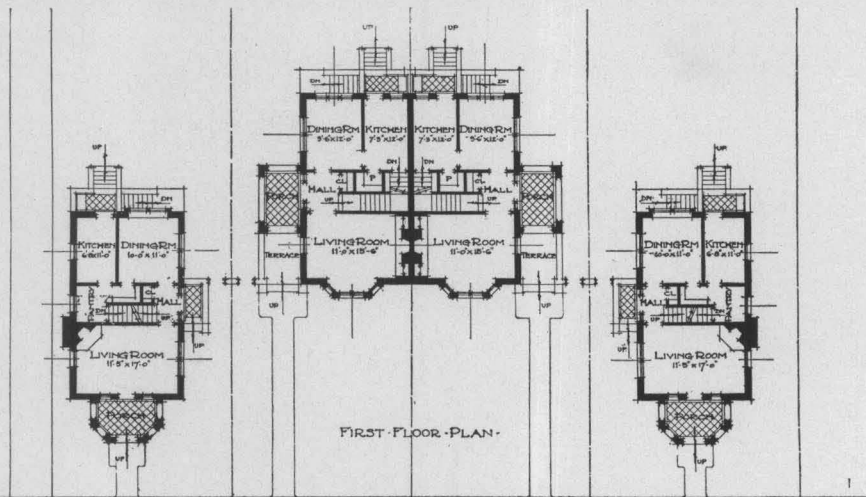
ALBRO & LINDBERG
 ARCHITECTS

FOREST HILLS GARDENS



GROUP XVIII-B

DETACHED HOUSES 6 ROOMS AND BATH. SEMI-DETACHED HOUSES 7 ROOMS AND BATH

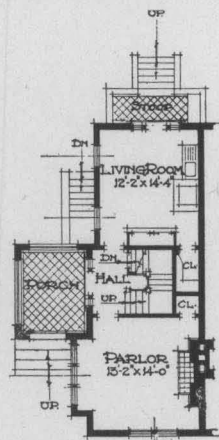


TWO DETACHED, TWO SEMI-DETACHED
SINGLE FAMILY HOUSES

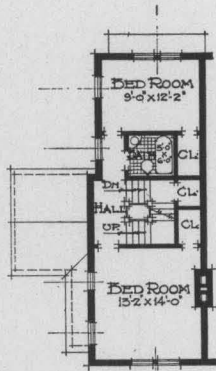
GROUP XVIII-B

GROSVENOR ATTERBURY, F. A. I. A.
ARCHITECT

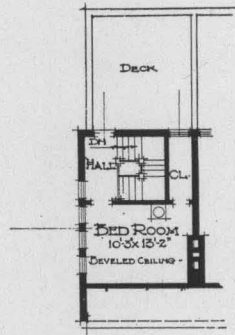
FOREST HILLS GARDENS



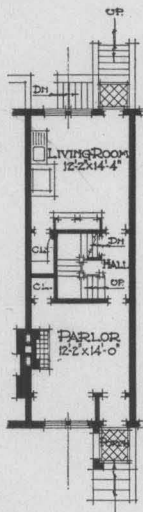
~ FIRST FLOOR PLAN ~



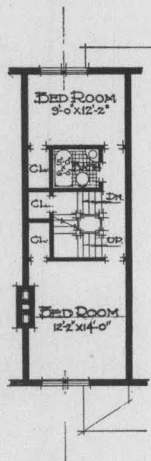
~ SECOND FLOOR PLAN ·
· TYPICAL END HOUSES ·



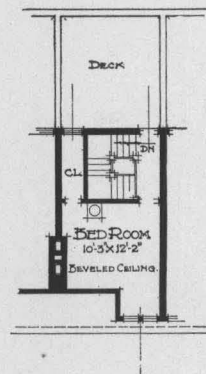
~ THIRD FLOOR PLAN ~



~ FIRST FLOOR PLAN ~



~ SECOND FLOOR PLAN ·
· TYPICAL INTERIOR HOUSES ·



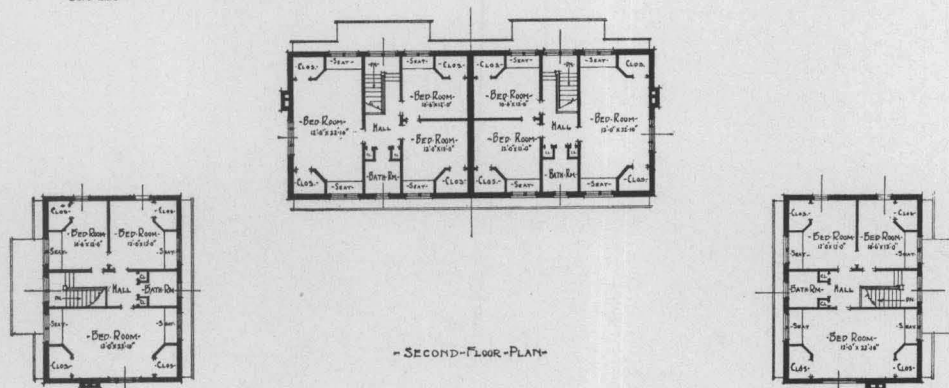
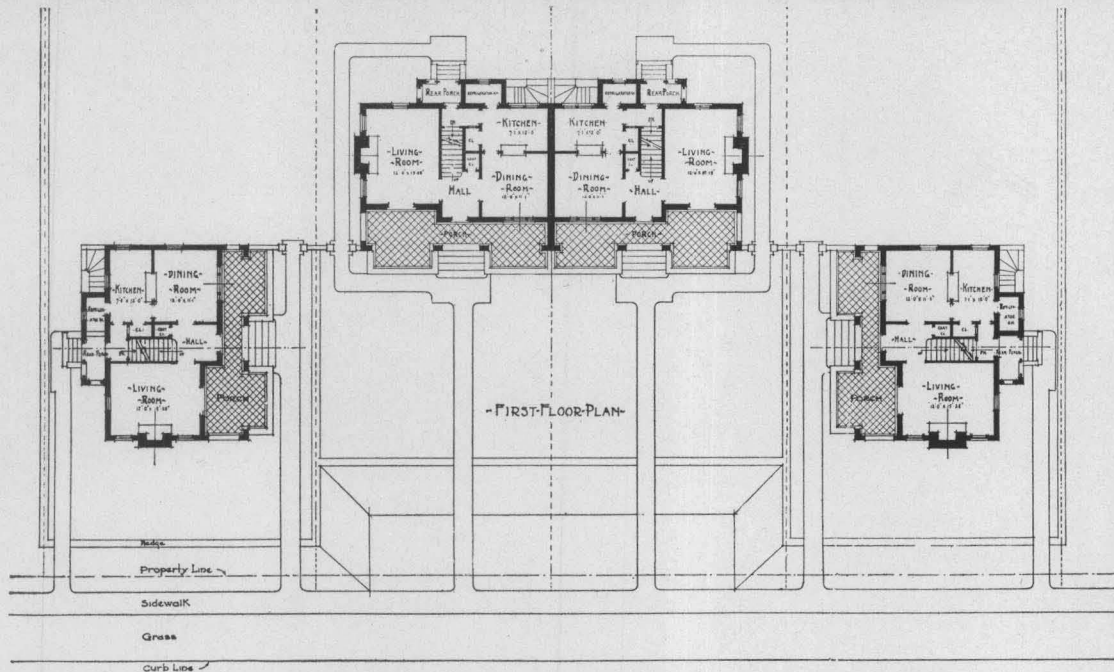
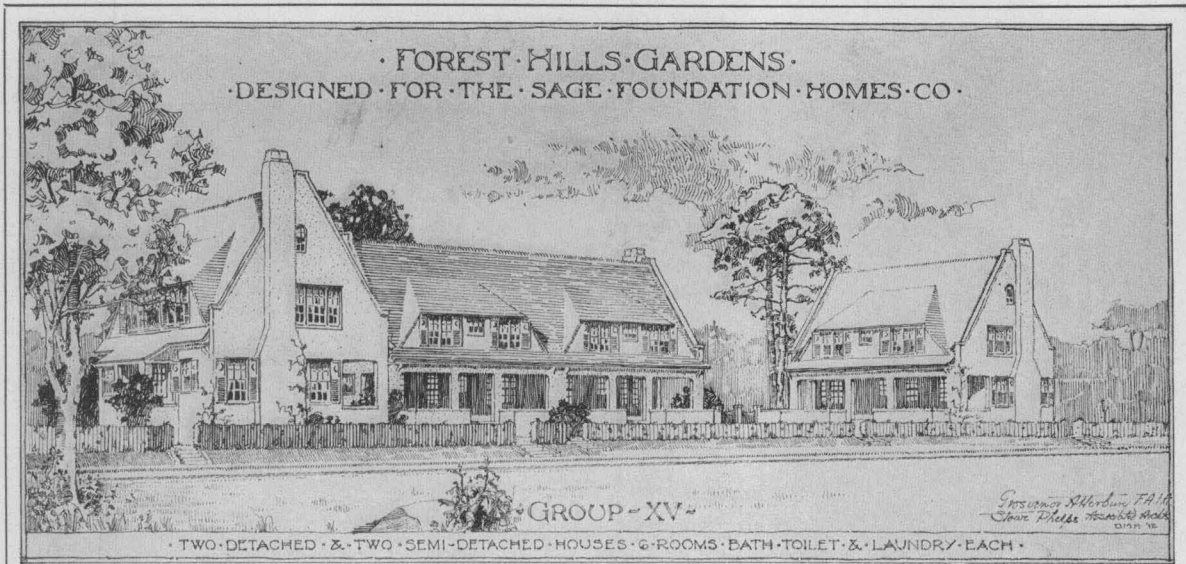
~ THIRD FLOOR PLAN ~

EIGHT
SINGLE FAMILY HOUSES

GROUP XVI-B

GROSVENOR ATTERBURY, F. A. I. A.
ARCHITECT

FOREST HILLS GARDENS

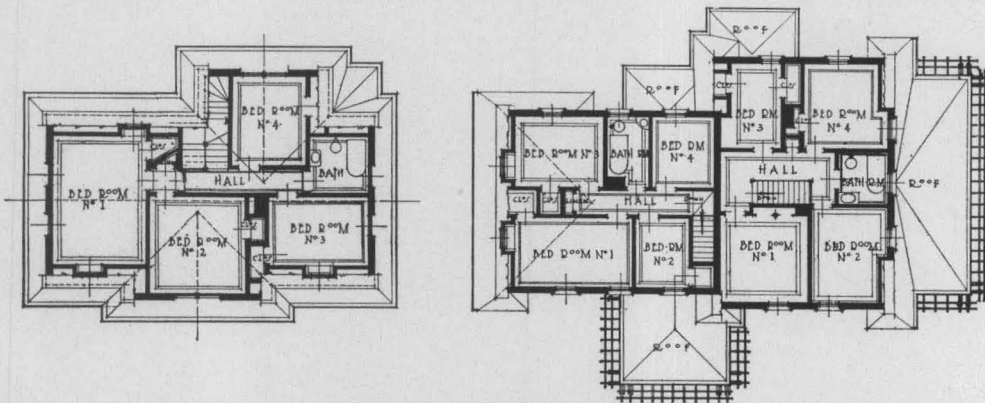


TWO DETACHED AND TWO SEMI-DETACHED HOUSES.

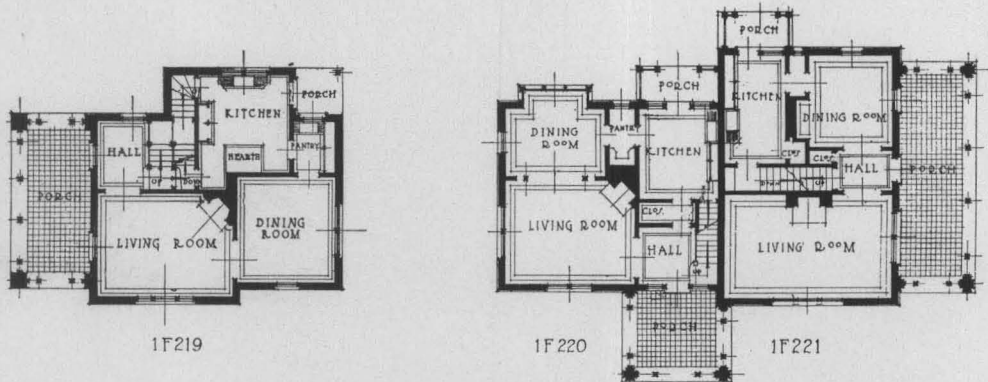
GROUP XV

GROSVENOR ATTERBURY, F. A. I. A.
ARCHITECT

FOREST HILLS GARDENS



SECOND FLOOR PLANS



FIRST FLOOR PLANS

· ONE SINGLE FAMILY HOUSE · SEVEN ROOMS & BATH · · TWO SEMI-DETACHED HOUSES · SEVEN ROOMS & BATH EACH ·

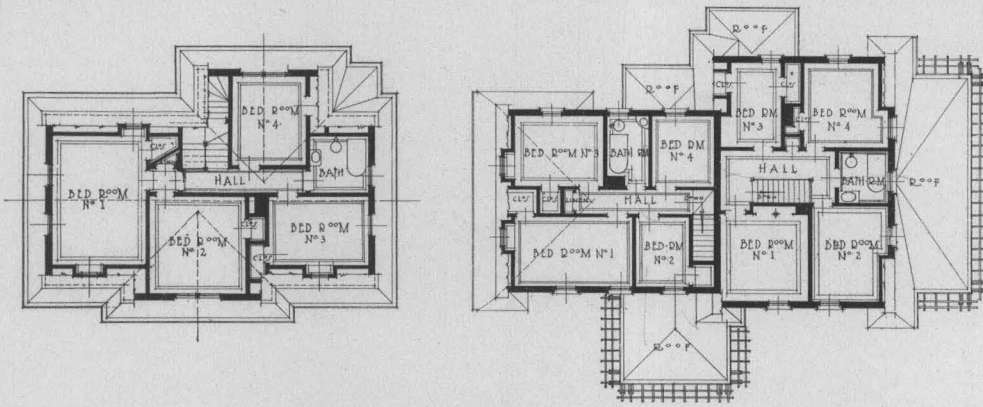
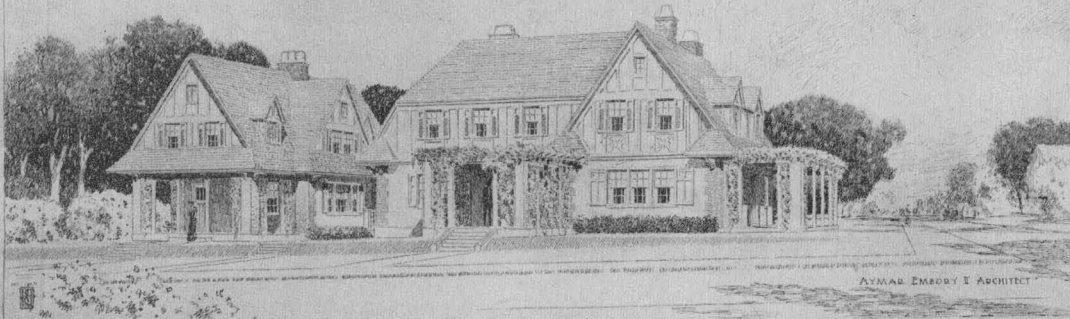
ONE SINGLE FAMILY HOUSE
TWO SEMI-DETACHED HOUSES

GROUP XIV

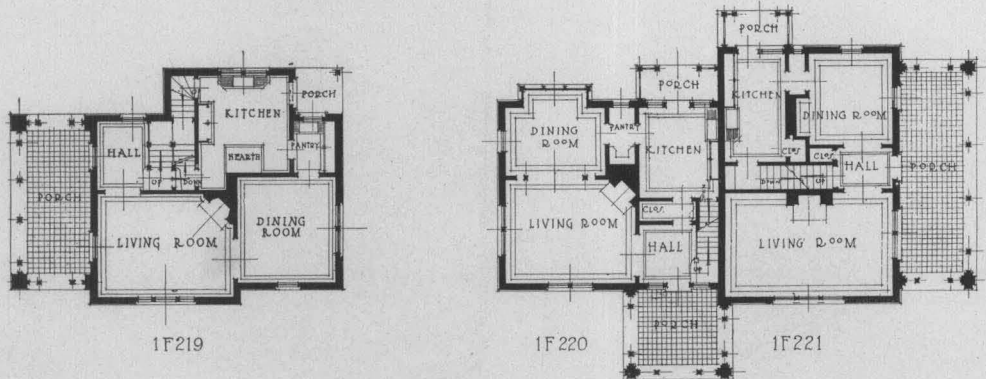
AYMAR EMBURY
ARCHITECT

FOREST HILLS GARDENS

FOREST HILLS GARDENS THE SAGE FOUNDATION HOMES & OWNERS



SECOND FLOOR PLANS



FIRST FLOOR PLANS

· ONE SINGLE FAMILY HOUSE · SEVEN ROOMS & BATH · · TWO SEMI-DETACHED HOUSES · SEVEN ROOMS & BATH EACH ·

ONE SINGLE FAMILY HOUSE
TWO SEMI-DETACHED HOUSES

GROUP XIV

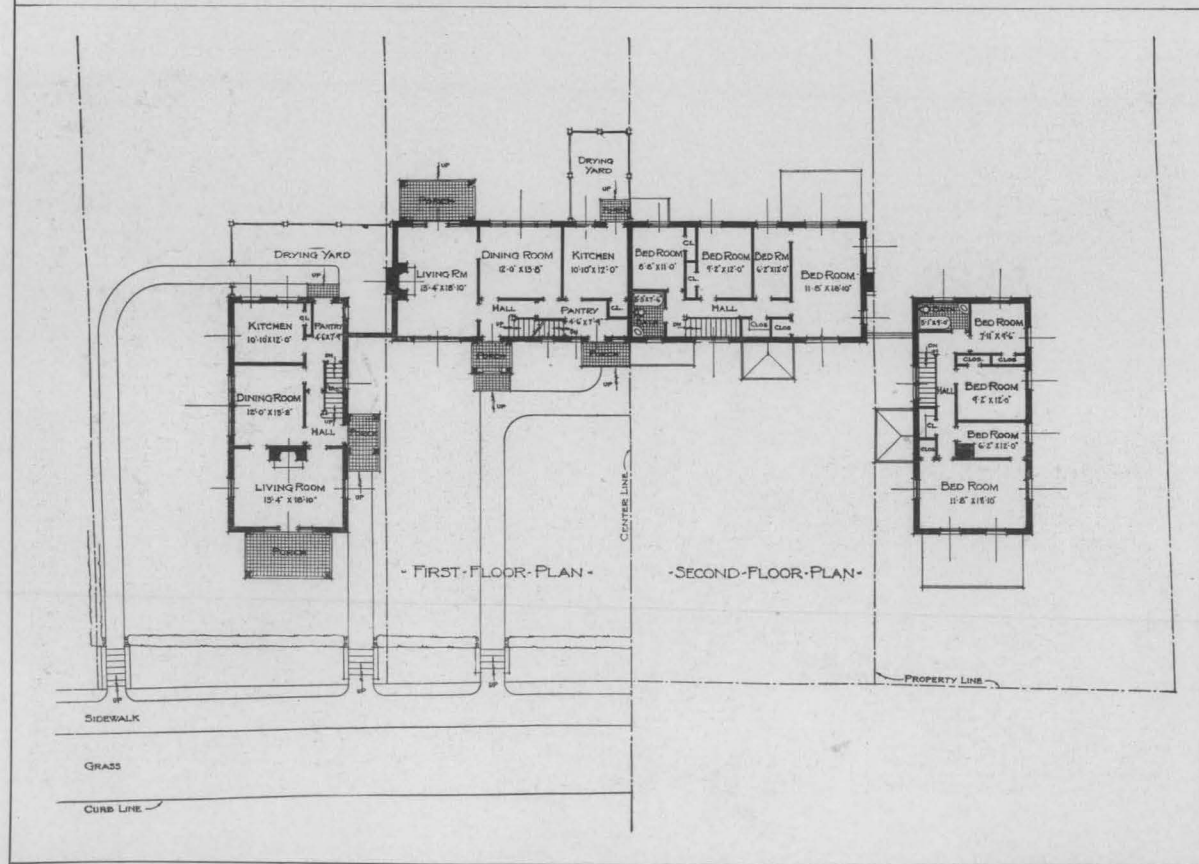
AYMAR EMBURY
ARCHITECT

FOREST HILLS GARDENS

FOREST HILLS GARDENS



GROUP XIII
LOOKING NORTH



GROUP XIII
LOOKING EAST

TWO DETACHED, TWO SEMI-DETACHED
SINGLE FAMILY HOUSES

GROUP XIII

WILSON EYRE, F. A. I. A.
ARCHITECT

FOREST HILLS GARDENS



FRONT GARDENS OF GROUP VI-B

Group IV B

FOREST HILLS GARDENS



ENTRANCE AND GARDEN OF HOUSE I-F 18—GROUP VI-A

FOREST HILLS GARDENS



FRONT WALL OF GROUP VI-A

FOREST HILLS GARDENS



FRONT WALL OF GROUP VI-A