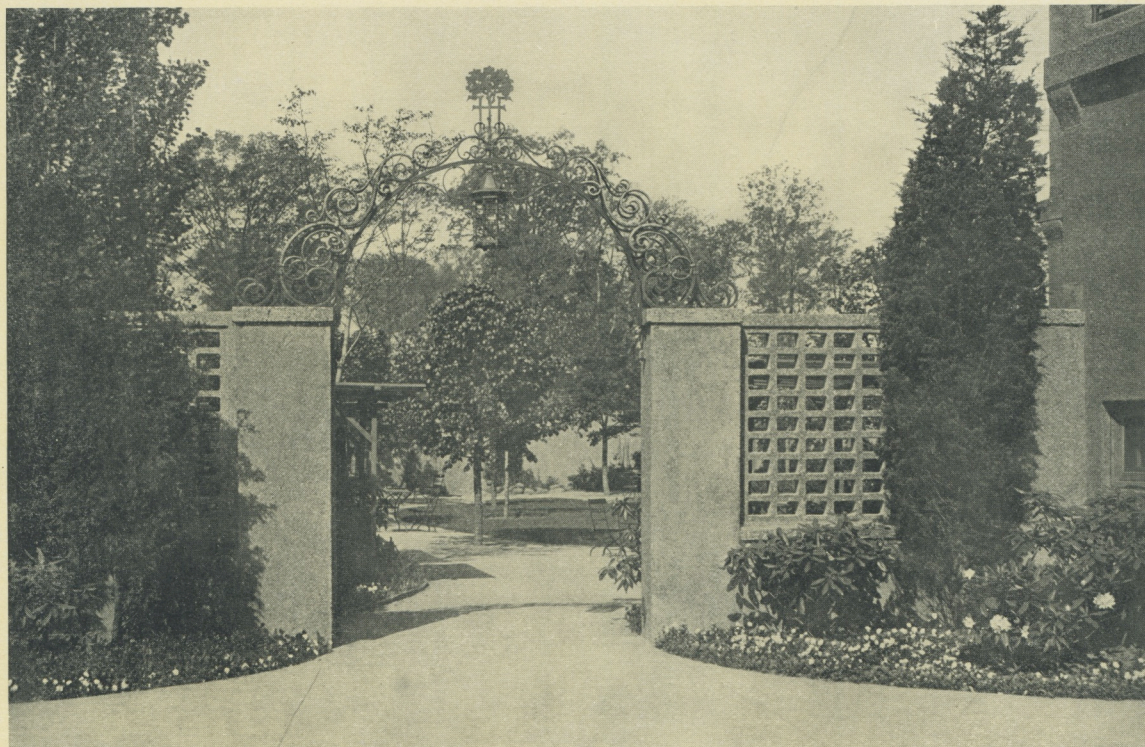


FOREST HILLS GARDENS



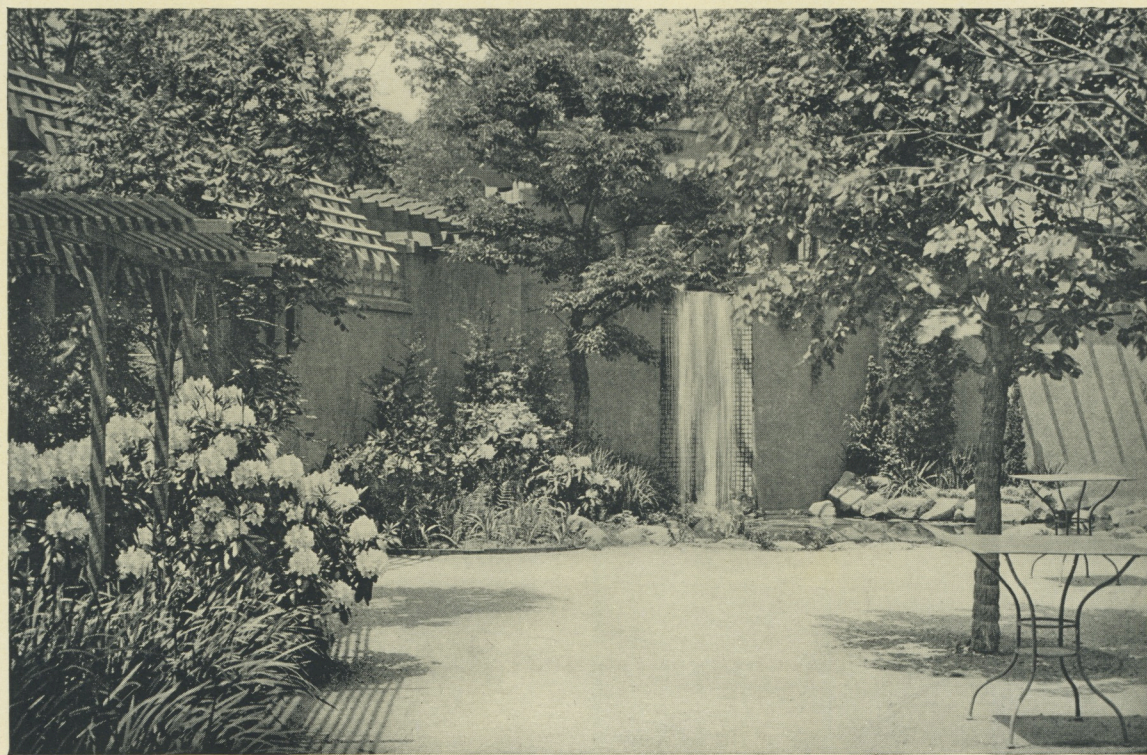
ENTRANCE TO TEA GARDEN



THE POOL IN THE TEA GARDEN

2

FOREST HILLS GARDENS

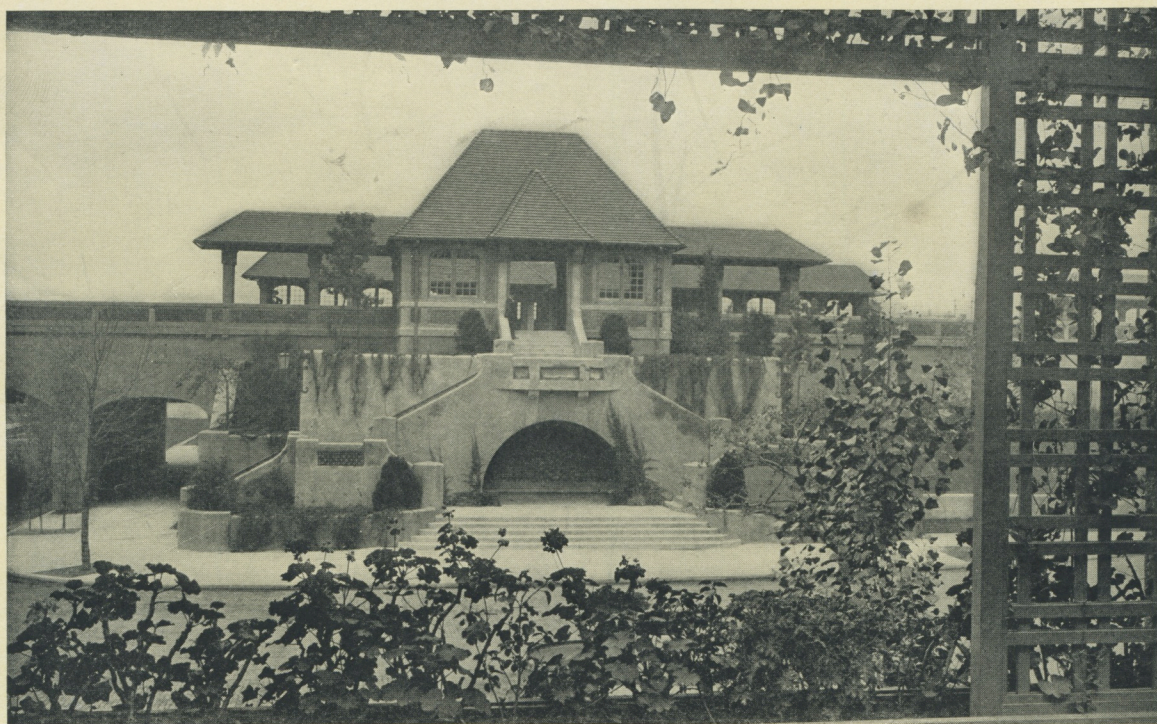


CASCADE FOUNTAIN IN THE TEA GARDEN



ENTRANCE TO TENNIS COURT FROM TEA GARDEN

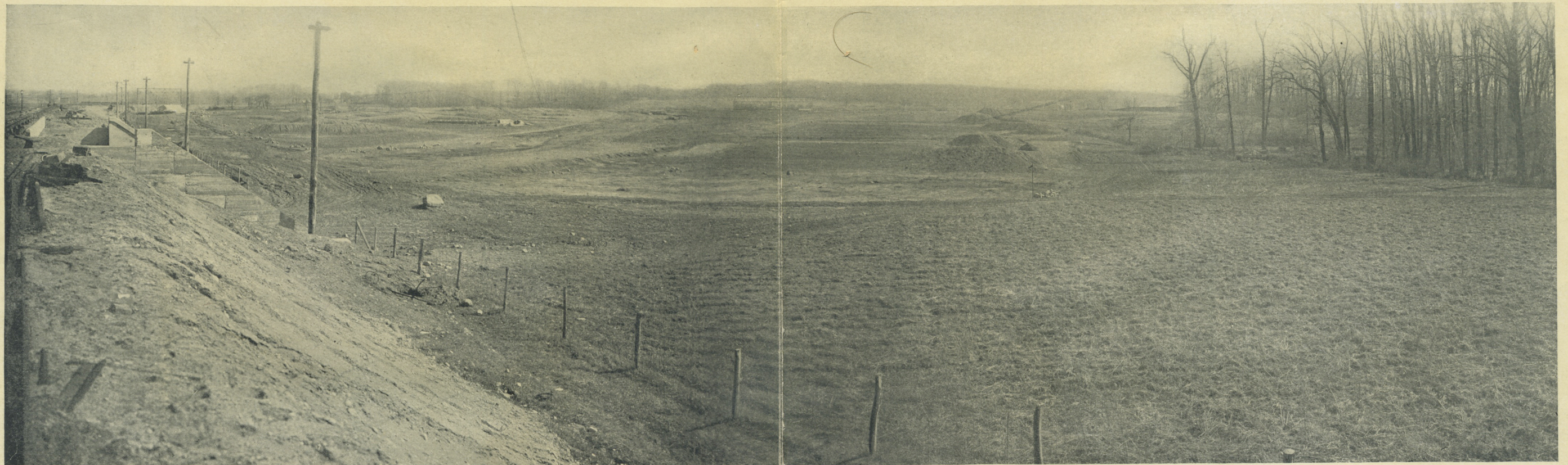
FOREST HILLS GARDENS



THE STATION FROM SECOND STORY LOGGIA OF THE INN



STORES AND APARTMENTS, STATION SQUARE



FOREST HILLS GARDENS, MARCH 1910



BUILDING OPERATIONS, FOREST HILLS INN, NOVEMBER 1910

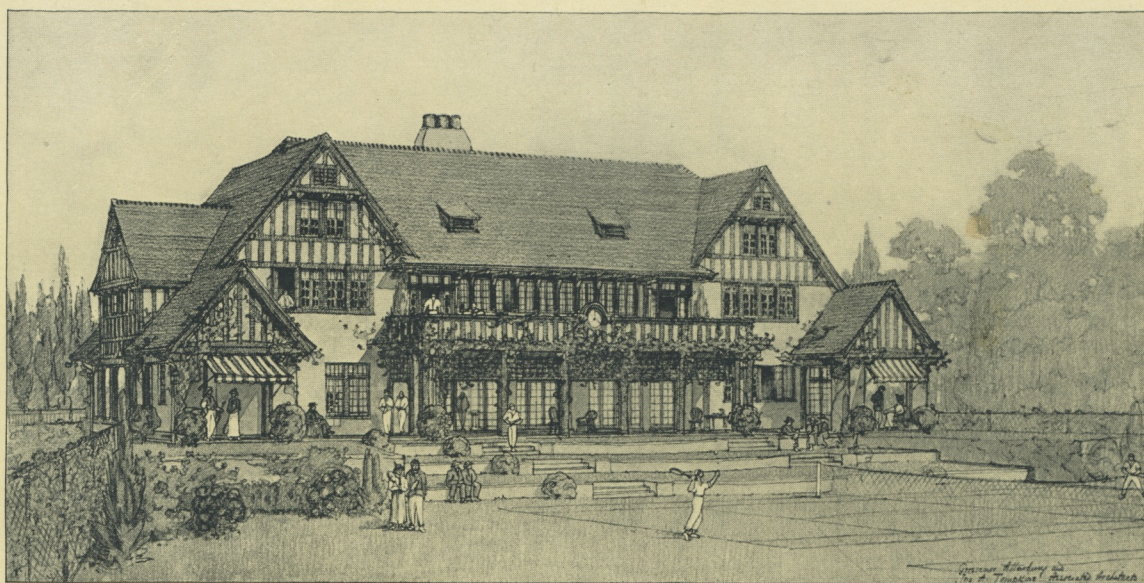


FOREST HILLS INN AND STATION SQUARE, JUNE 1911

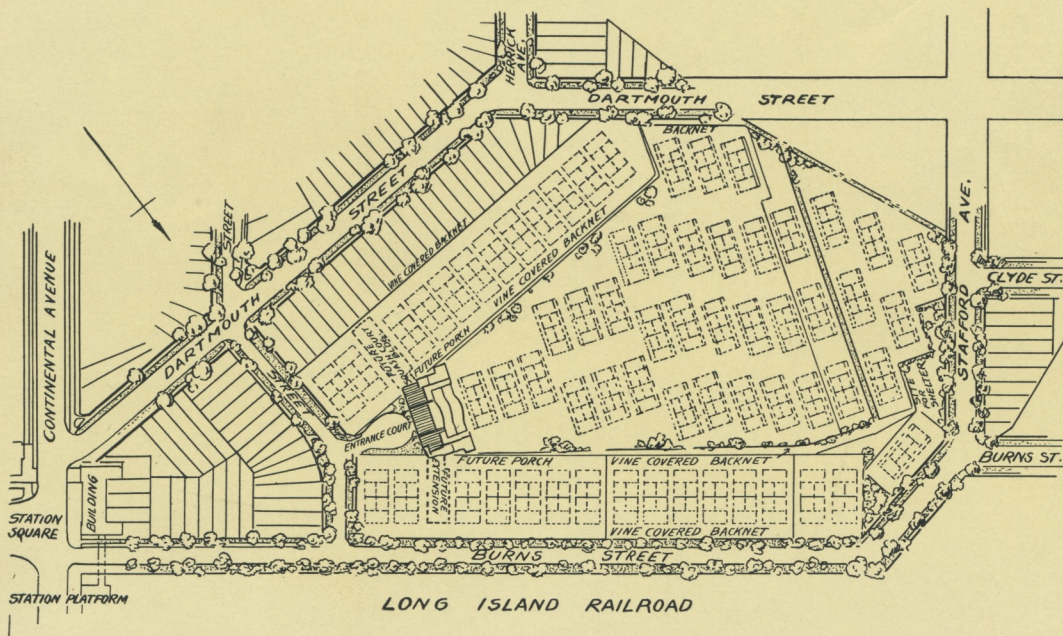
s/s



# FOREST HILLS GARDENS



CLUB HOUSE AND GROUNDS  
OF THE  
WEST SIDE TENNIS CLUB  
OF NEW YORK



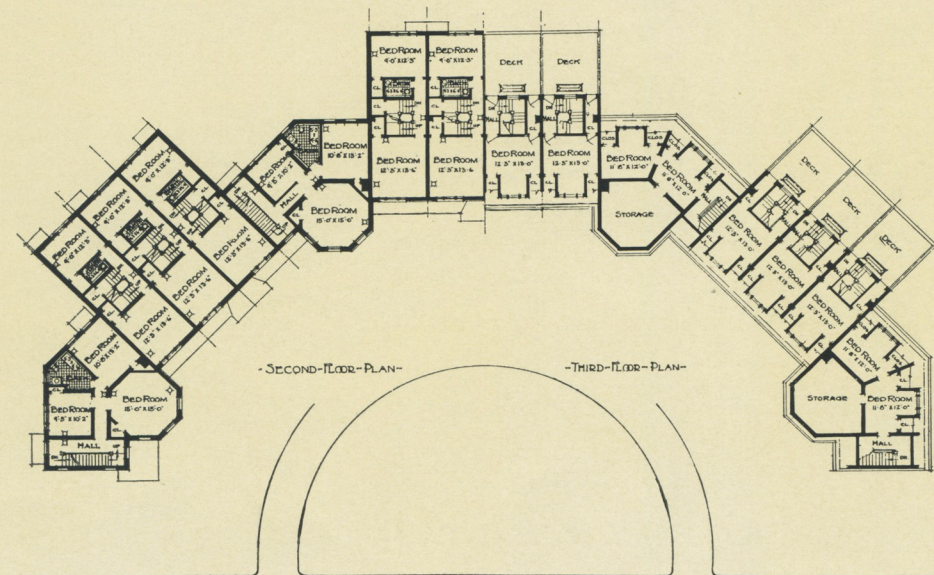
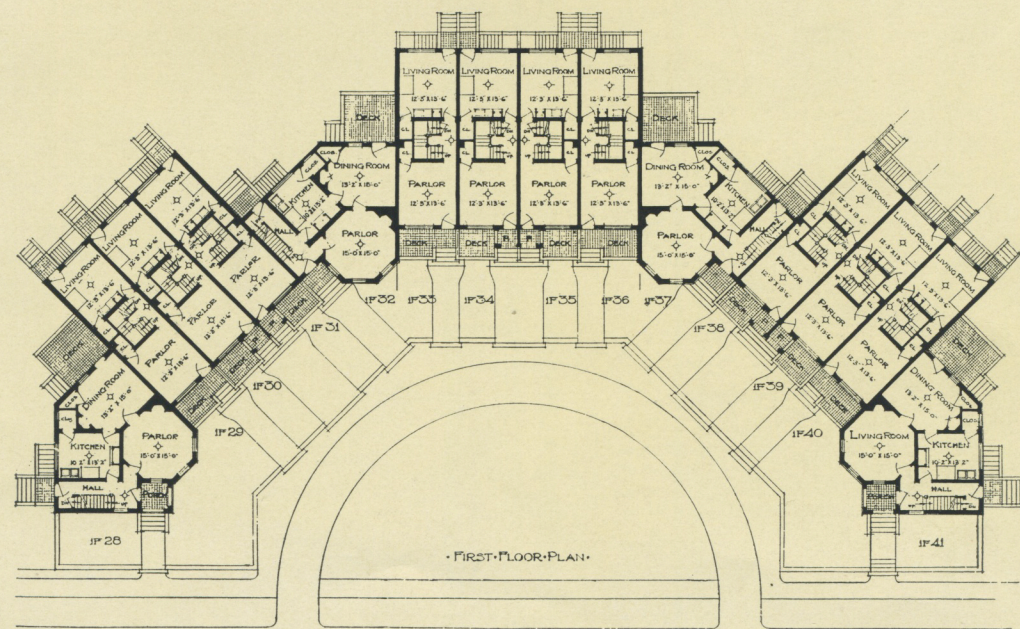
PLAN OF GROUNDS  
SIXTY-THREE TENNIS COURTS

· FOREST HILLS GARDENS ·  
 · DESIGNED FOR THE SAGE FOUNDATION HOMES CO ·



· GROUP II ·  
 · TEN 13-FOOT & FOUR 24-FOOT CORNER SINGLE FAMILY HOUSES ·

*Grosvenor Atterbury F. A. I. A.  
 Architect 1912*



TEN 13-FOOT AND FOUR 24-FOOT CORNER SINGLE  
 FAMILY HOUSES

GROUP II

GROSVENOR ATTERBURY, F. A. I. A.  
 ARCHITECT

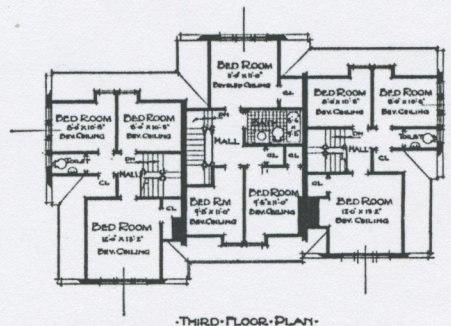
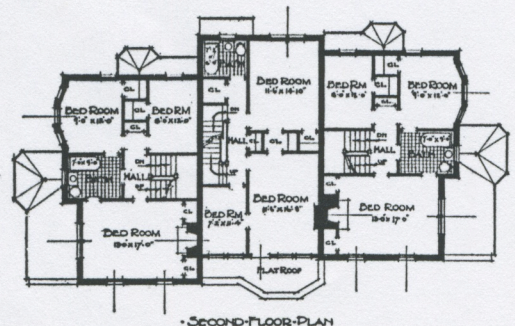
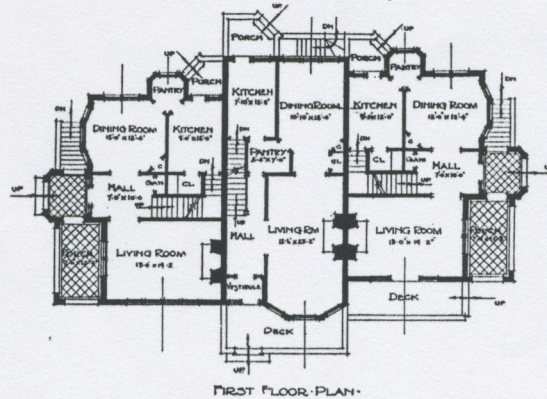
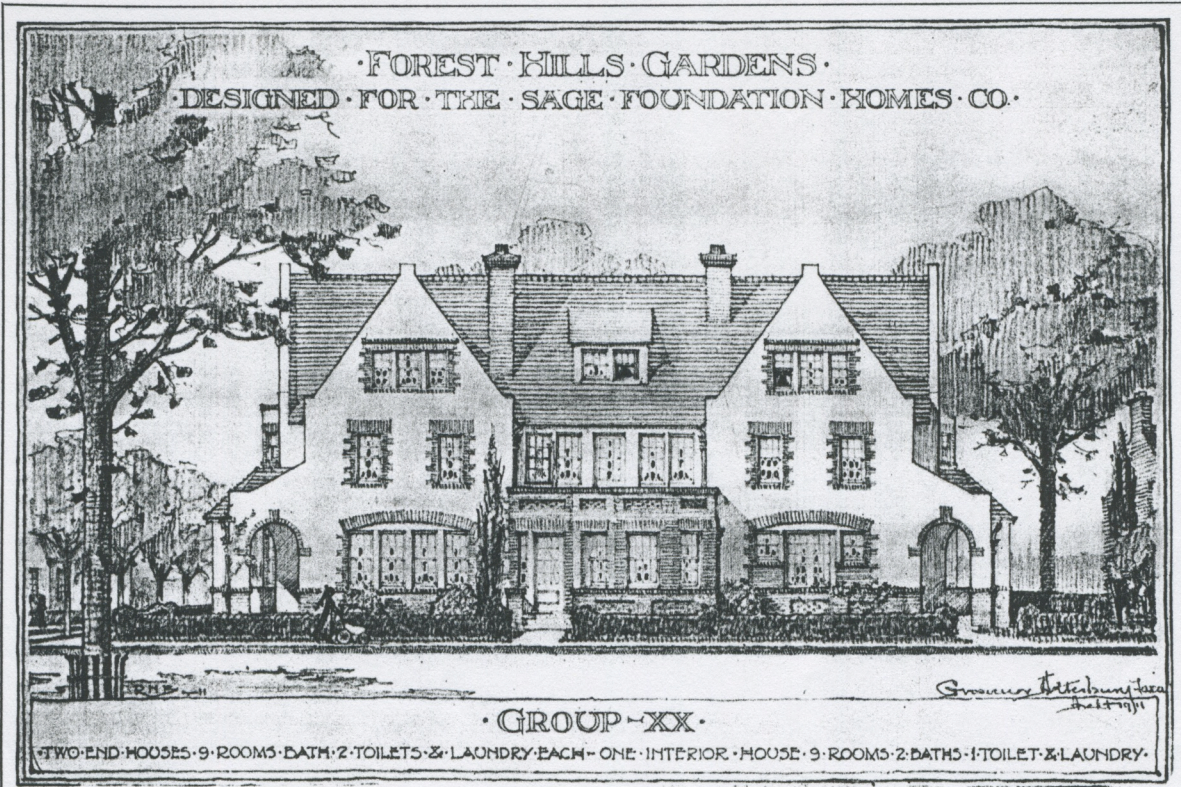
FOREST HILLS GARDENS



FRONT WALL OF GROUP VI-A



# FOREST HILLS GARDENS



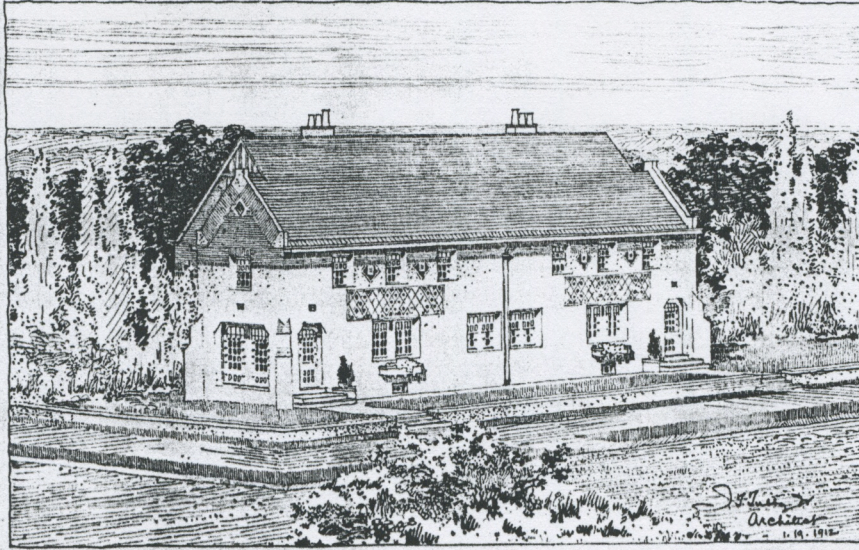
ONE INTERIOR, TWO SEMI-DETACHED HOUSES

## GROUP XX

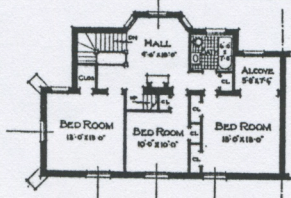
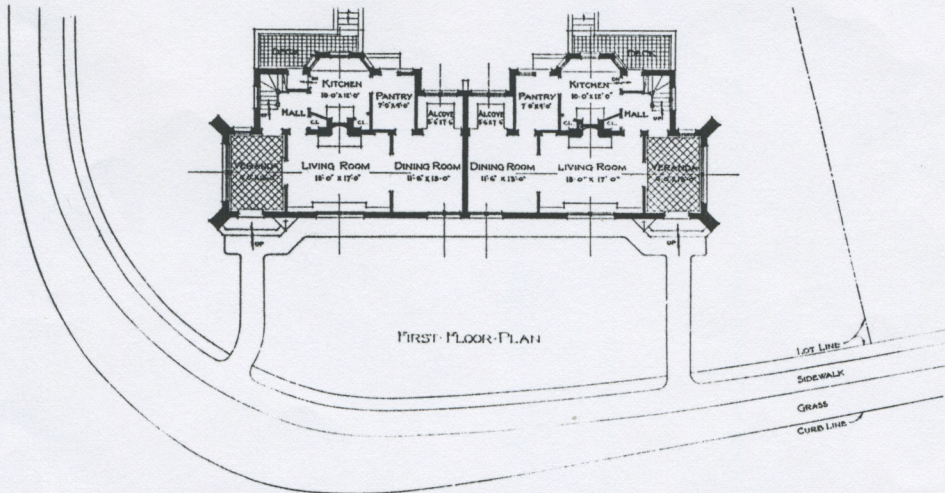
GROSVENOR ATTERBURY, F. A. I. A.  
ARCHITECT

# FOREST HILLS GARDENS

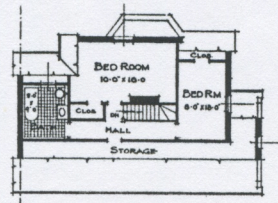
- FOREST HILLS GARDENS -  
 - DESIGNED FOR THE SAGE FOUNDATION HOMES CO. -



- GROUP XXIX -  
 - TWO SEMI-DETACHED SINGLE FAMILY HOUSES -  
 - 6 ROOMS & 2 BATHS EACH -



- SECOND FLOOR PLAN -



- THIRD FLOOR PLAN -

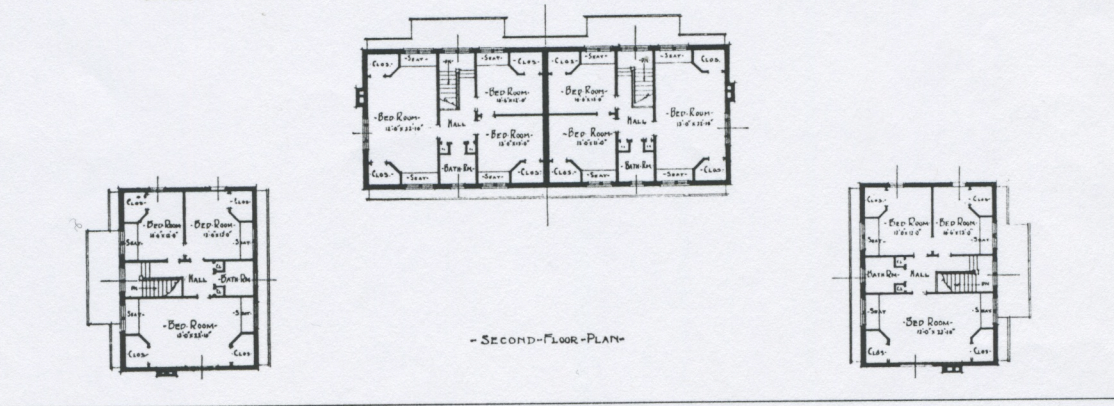
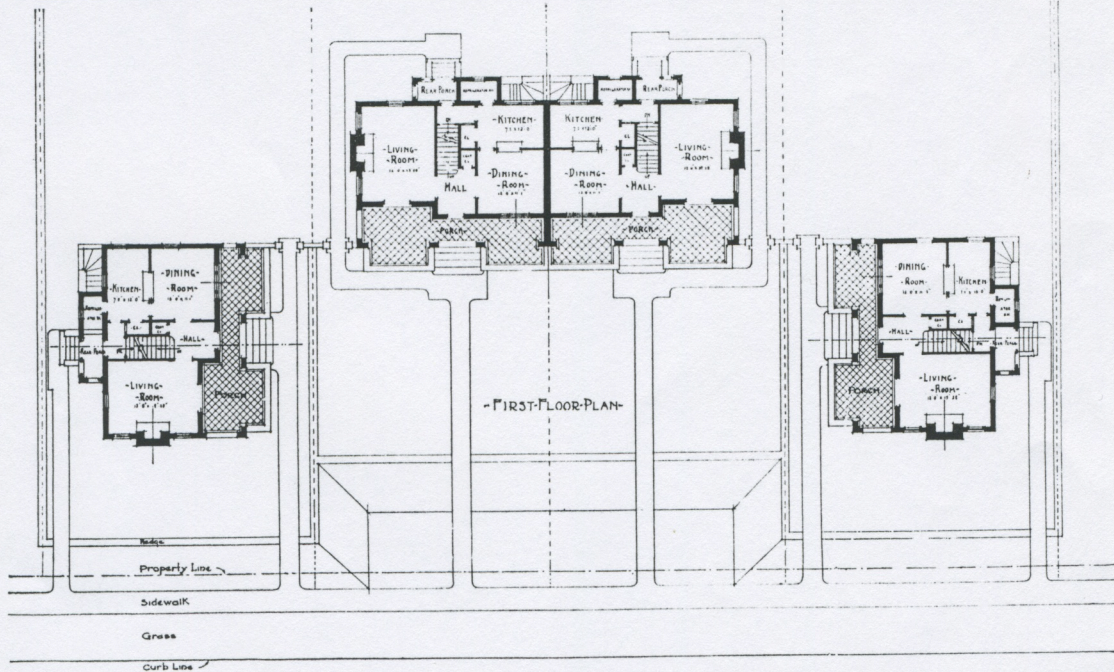
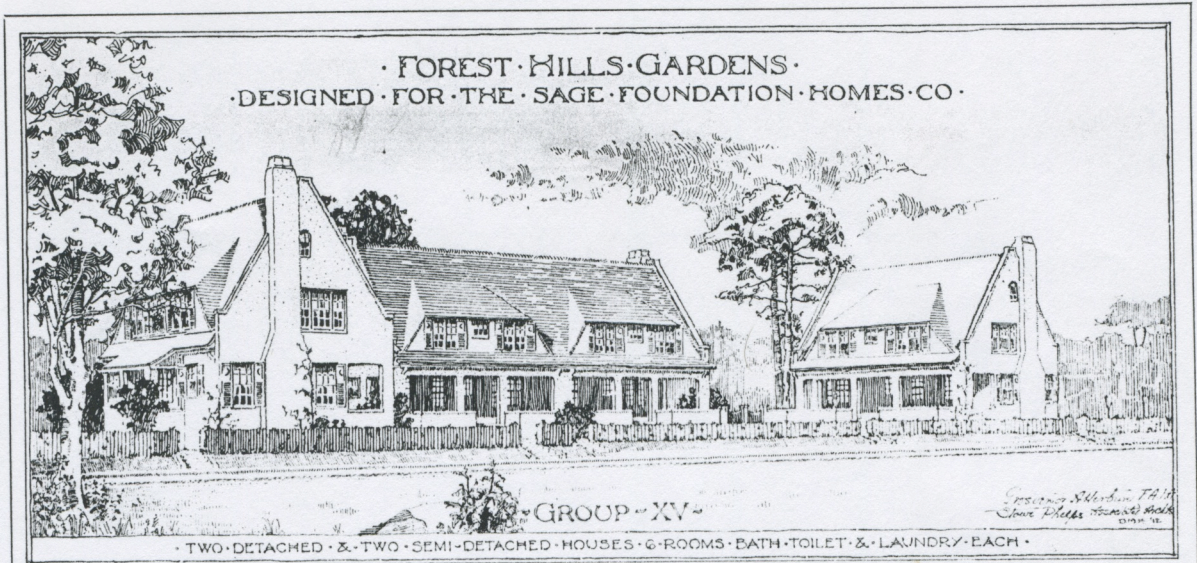
TWO SEMI-DETACHED  
 SINGLE FAMILY HOUSES

GROUP XXIX

J. T. TUBBY, JR.  
 ARCHITECT

GREENWAY NORTH

# FOREST HILLS GARDENS



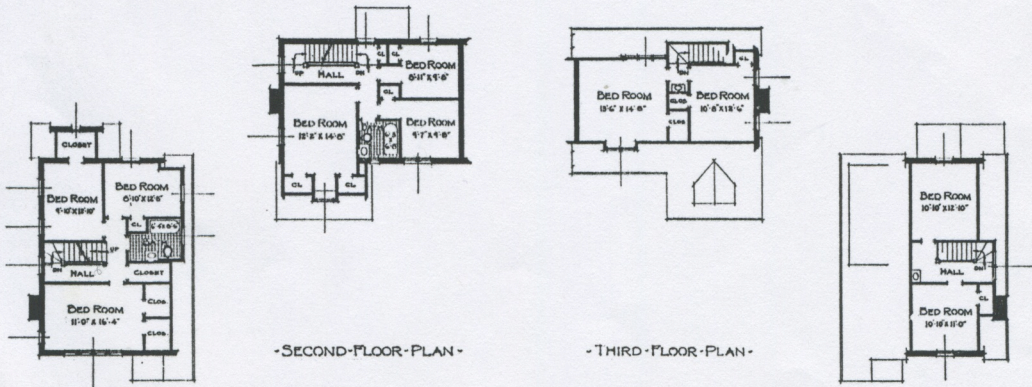
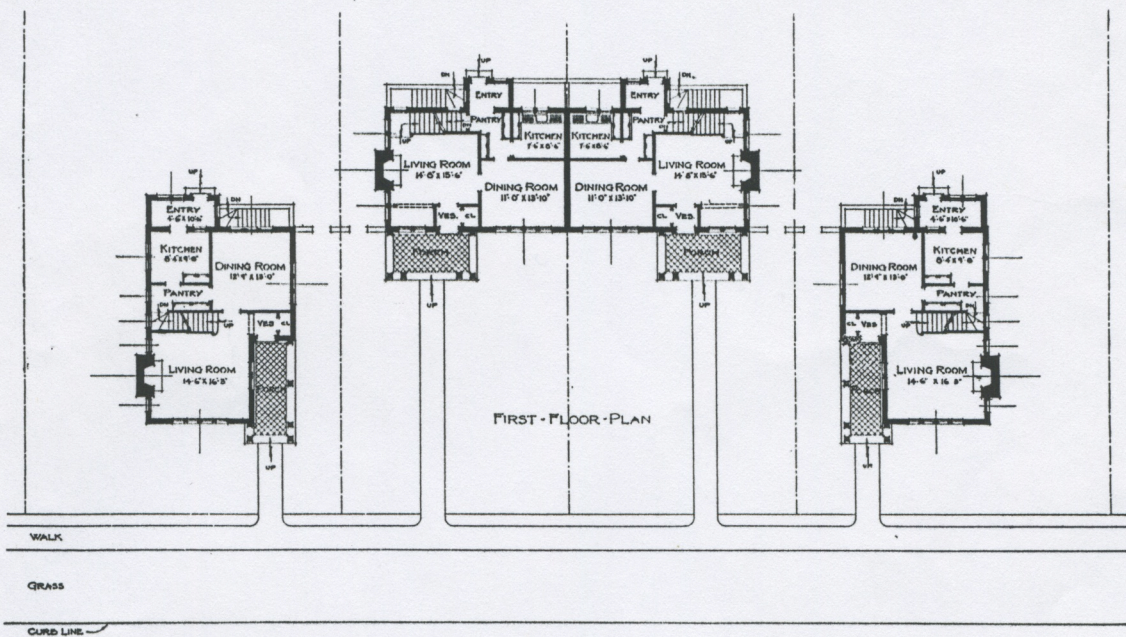
TWO DETACHED AND TWO SEMI-DETACHED HOUSES

GROUP XV

GROSVENOR ATTERBURY, F. A. I. A.  
ARCHITECT

GREENWAY NORTH

# FOREST HILLS GARDENS



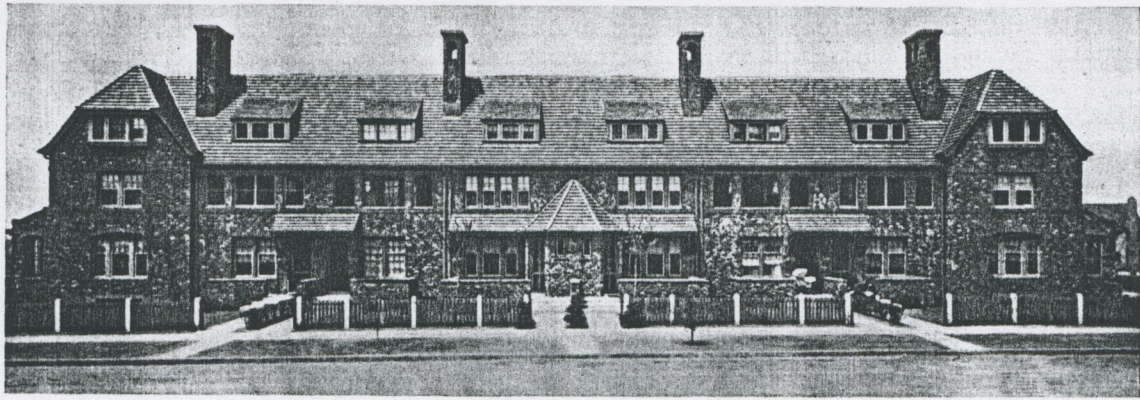
TWO DETACHED, TWO SEMI-DETACHED  
SINGLE FAMILY HOUSES

GROUP XXVIII

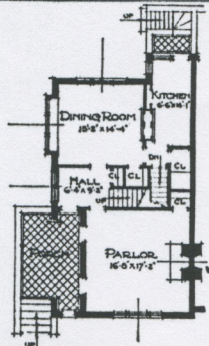
ALBRO & LINDBERG  
ARCHITECTS

*PURITAN AVE*

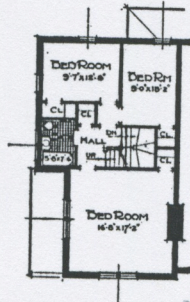
# FOREST HILLS GARDENS



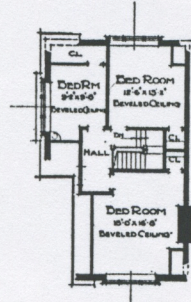
GROUP XIX—TWO END HOUSES 8 ROOMS AND BATH. SIX INTERIOR HOUSES 7 ROOMS AND BATH



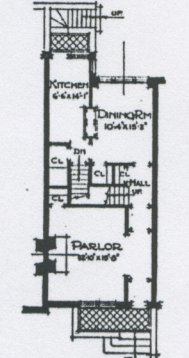
FIRST FLOOR PLAN



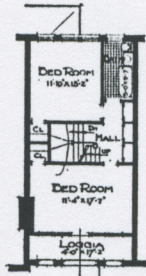
SECOND FLOOR PLAN—END HOUSES—



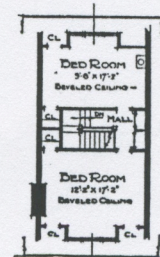
THIRD FLOOR PLAN—



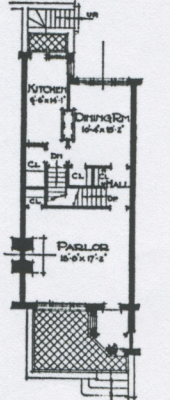
FIRST FLOOR PLAN—



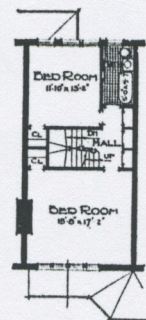
SECOND FLOOR PLAN—INTERIOR HOUSES—



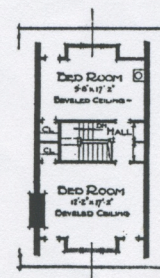
THIRD FLOOR PLAN—



FIRST FLOOR PLAN



SECOND FLOOR PLAN—INTERIOR HOUSES—



THIRD FLOOR PLAN—

EIGHT 18-FOOT AND 20 FOOT  
SINGLE FAMILY HOUSES

## GROUP XIX

GROSVENOR ATTERBURY, F. A. I. A.  
ARCHITECT

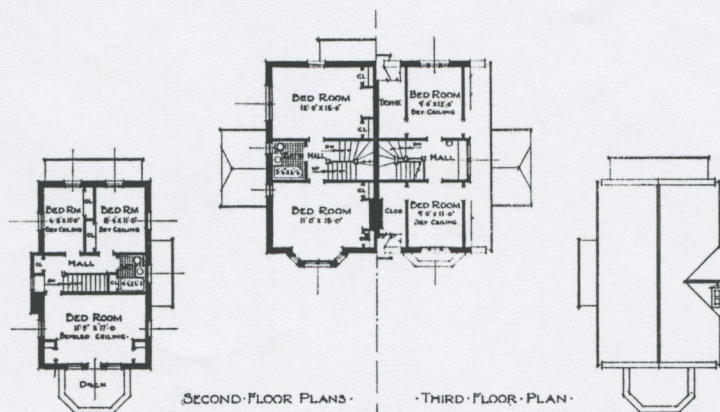
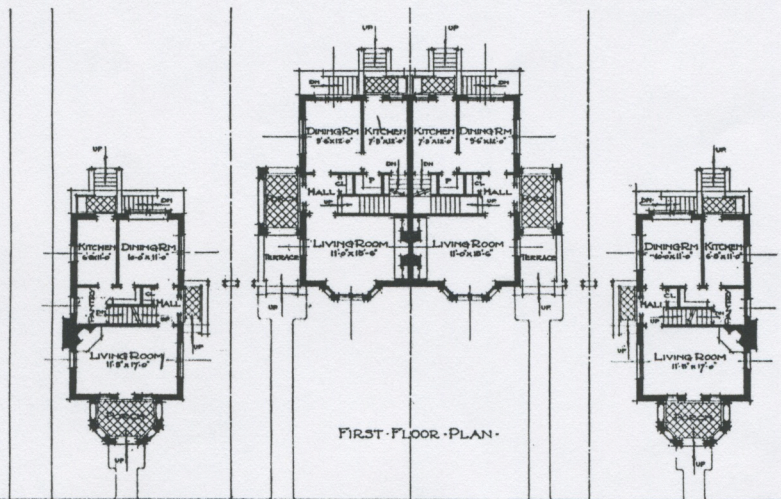
*PURITAN AVE.*

# FOREST HILLS GARDENS



GROUP XVIII-B

DETACHED HOUSES 6 ROOMS AND BATH. SEMI-DETACHED HOUSES 7 ROOMS AND BATH



TWO DETACHED, TWO SEMI-DETACHED  
SINGLE FAMILY HOUSES

## GROUP XVIII-B

GROSVENOR ATTERBURY, F. A. I. A.  
ARCHITECT

*INGRAM ST.*

FOREST HILLS GARDENS



VIEW SHOWING BRIDGE CONNECTING THE BUILDINGS OF THE INN